



Guide Price

£400,000

Freehold

2x  1x  1x 

**Walton Road, Romford,
Essex, RM5**

OVER 60?

Secure this property
for up to **59% less!**

 **DOUGLAS
ALLEN**
Helping you move forwards



Main features

- Ideal first time purchase or investment opportunity
- Nicely decorated
- Off road parking
- Outbuilding
- Close to local schools & High Street

Accommodation

GROUND FLOOR

Storm Porch

Lounge: 16'2 x 11'5 (4.93m x 3.48m)

Kitchen/Dining Room: 16'2 x 9'9 (4.93m x 2.97m)

Sun Room: 13'10 x 7'0 (4.22m x 2.14m)

Utility Room

FIRST FLOOR

Landing

Bedroom 1: 16'8 x 8'7 (5.08m x 2.62m)

Bedroom 2: 16'6 x 9'10 (5.03m x 3.00m)

Bathroom

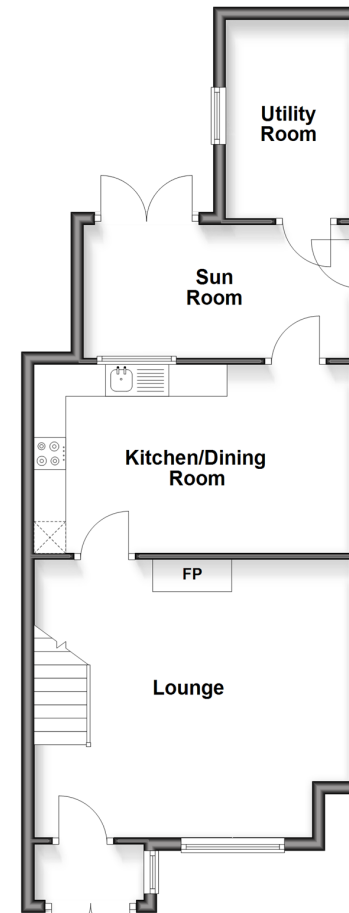
OUTSIDE

Off Road Parking

Rear Garden

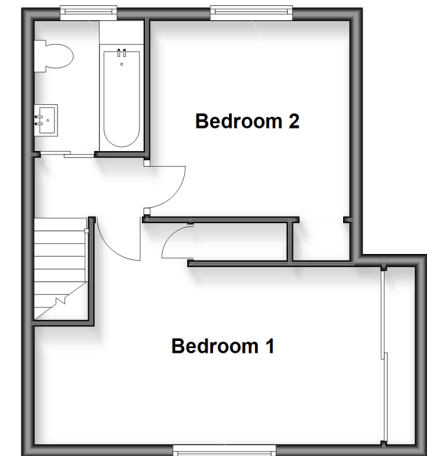
Ground Floor

Approx. 53.9 sq. metres (580.3 sq. feet)



First Floor

Approx. 36.2 sq. metres (389.6 sq. feet)



Call Hornchurch - 01708 437777 ■ douglasallen.co.uk

- A private rental licensing scheme applies to some properties in this area, please check with the Local Authority before proceeding
- Legal advice should be taken to verify fixtures/fittings, planning, alterations and/or lease details
- Appliances & services are untested, dimensions are approximate and floor plans are not to scale
- Through a Homewise Home For Life Plan people aged 60+ can secure this property for up to 59% less, by purchasing a Lifetime Lease



51916634/20260110/CC1/DT