



**Guide Price**  
**£475,000**

**Freehold**

3x  1x  2x 

**Lyndhurst Drive,  
Hornchurch, Essex,  
RM11**

**OVER 60?**

Secure this property  
for up to **59% less!**

 **DOUGLAS  
ALLEN**  
Helping you move forwards





## Main features

- Potential to extend STPP
- Off road parking
- Large rear garden backing onto allotments
- Popular location for local "outstanding" schools
- Convenient for Hornchurch Town Centre & local amenities

## Accommodation

### GROUND FLOOR

Hallway

Lounge: 13'9 into bay x 13'5 (4.19m x 4.09m)

Kitchen: 8'3 x 7'8 (2.52m x 2.34m)

Dining Area: 12'0 x 11'8 (3.66m x 3.56m)

Family Room: 18'2 x 9'1 (5.54m x 2.77m)

### FIRST FLOOR

Landing

Bedroom 1: 14'6 into bay x 12'10 (4.42m x 3.91m)

Bedroom 2: 12'8 into fitted wardrobes x 11'9 (3.86m x 3.58m)

Bedroom 3: 8'2 x 6'9 (2.49m x 2.06m)

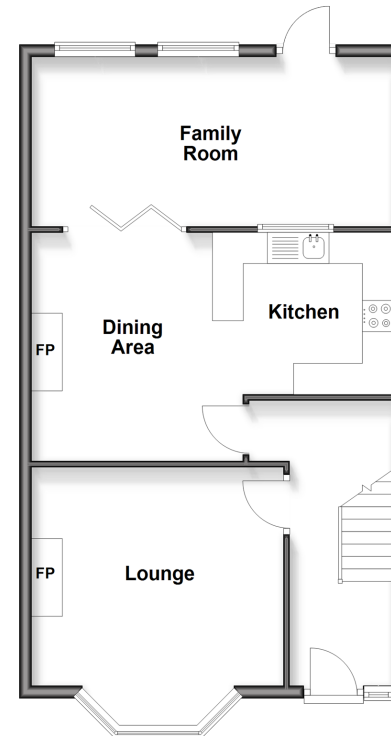
Bathroom

### OUTSIDE

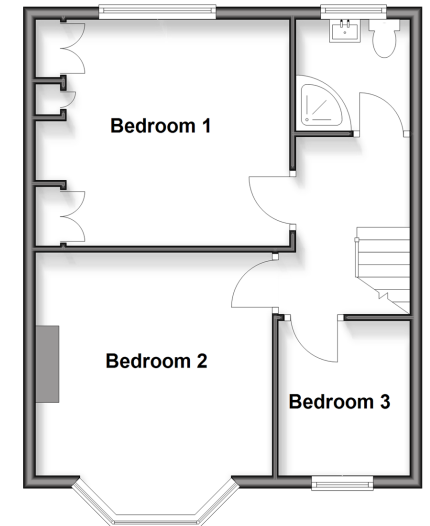
Large Rear Garden

Off Road Parking

**Ground Floor**  
Approx. 59.8 sq. metres (643.8 sq. feet)



**First Floor**  
Approx. 45.0 sq. metres (484.7 sq. feet)



**Call Hornchurch - 01708 437777 ■ [douglasallen.co.uk](http://douglasallen.co.uk)**

- A private rental licensing scheme applies to some properties in this area, please contact us before proceeding
- Legal advice should be taken to verify fixtures/fittings, planning, alterations and/or lease details
- Appliances & services are untested, dimensions are approximate and floor plans are not to scale
- Through a Homewise Home For Life Plan people aged 60+ can secure this property for up to 50% less, by purchasing a Lifetime Lease.