



Price
£500,000

Freehold

3x  1x  2x 

**Saunton Road,
Hornchurch, Essex,
RM12**

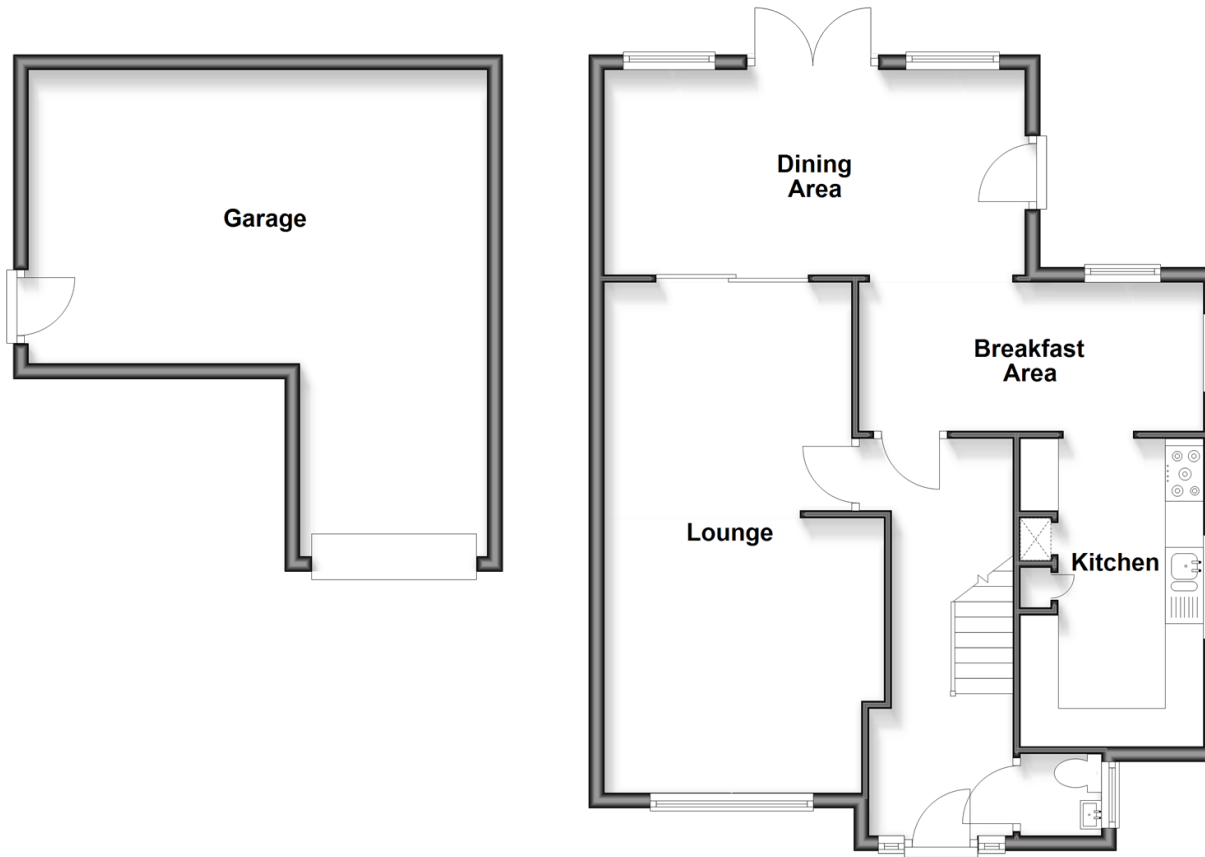
OVER 60?

Secure this property
for up to **59% less!**

 **DOUGLAS
ALLEN**
Helping you move forwards

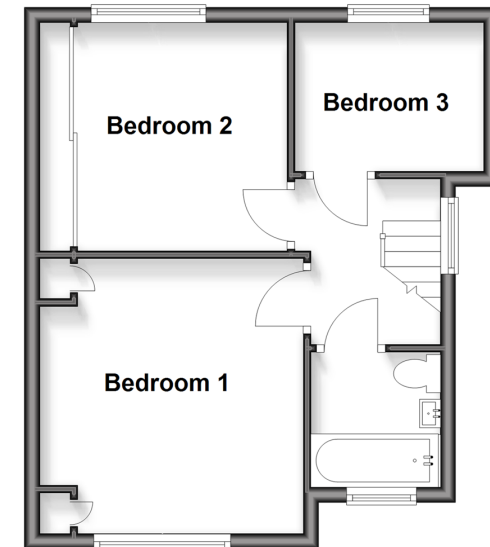
Ground Floor

Approx. 69.2 sq. metres (744.6 sq. feet)



First Floor

Approx. 35.4 sq. metres (381.2 sq. feet)



Accommodation

GROUND FLOOR

Hallway

Cloakroom

Lounge: 23'0 x 11'7 (7.02m x 3.53m)

Dining Area: 14'9 x 6'7 (4.50m x 2.01m)

Breakfast Area: 18'3 x 9'3 (5.57m x 2.82m)

Kitchen: 12'5 x 7'8 (3.79m x 2.34m)

FIRST FLOOR

Bedroom 1: 12'10 x 11'3 (3.91m x 3.43m)

Bedroom 2: 10'8 x 9'6 (3.25m x 2.90m)

Bedroom 3: 8'2 x 6'7 (2.49m x 2.01m)

Bathroom: 6'4 x 5'6 (1.93m x 1.68m)

OUTSIDE

Rear Garden

Off Road Parking

Double Garage: 21'0 x 19'10 (6.41m x 6.05m)



Main features

- No onward chain
- Extended to side and rear
- Modernisation required
- Ground floor cloakroom
- Double garage and off road parking
- Situated less than half a mile to Elm Park Station



Nearest Schools

Primary Schools: Wykeham Primary 0.3 miles, Benhurst Primary 0.4 miles, St Mary's Catholic Primary 0.5 miles
Secondary Schools: Hornchurch High School 0.2 miles, Abbs Cross Academy 0.6 miles, Raphael Independent School 0.9 miles



Transport Information

Train Stations: Elm Park 0.4 miles, Hornchurch 1.0 miles, Romford 1.3 miles, Emerson Park 1.4 miles, Gidea Park 1.7 miles



Address

Saunton Road, Hornchurch, Essex, RM12



Directions

For directions to this property please contact us.



Call Hornchurch Branch 01708 437777 ■ douglasallen.co.uk



- A private rental licensing scheme applies to some properties in this area, please contact us before proceeding
- Appliances & services are untested, dimensions are approximate and floor plans are not to scale

- Legal advice should be taken to verify fixtures/fittings, planning, alterations and/or lease details
- Through a Homewise Home For Life Plan people aged 60+ can secure this property for up to 50% less, by purchasing a Lifetime Lease.



51916489/20250920/CC1/DT