



Price

£700,000

Freehold

4x  2x  2x 

**Glebe Way, Hornchurch,
Essex, RM11**

OVER 60?

Secure this property
for up to **59% less!**

 **DOUGLAS
ALLEN**
Helping you move forwards

Accommodation

GROUND FLOOR

Hallway

Cloakroom

Lounge: 15'2 x 11'1 (4.63m x 3.38m)

Dining Area: 17'4 x 10'8 (5.29m x 3.25m)

Kitchen: 14'8 x 10'8 (4.47m x 3.25m)

Orangery: 13'7 x 9'4 (4.14m x 2.85m)

FIRST FLOOR

Landing

Bedroom 2: 15'4 x 10'7 (4.68m x 3.23m)

Bedroom 3: 10'9 x 8'6 (3.28m x 2.59m)

Bedroom 4: 8'3 x 6'3 (2.52m x 1.91m)

Bathroom: 16'2 x 6'8 (4.93m x 2.03m)

SECOND FLOOR

Landing

Bedroom 1: 17'7 (5.36m) x 11'4 (3.46m)
narrowing to 8'9 (2.67m)

En-Suite

OUTSIDE

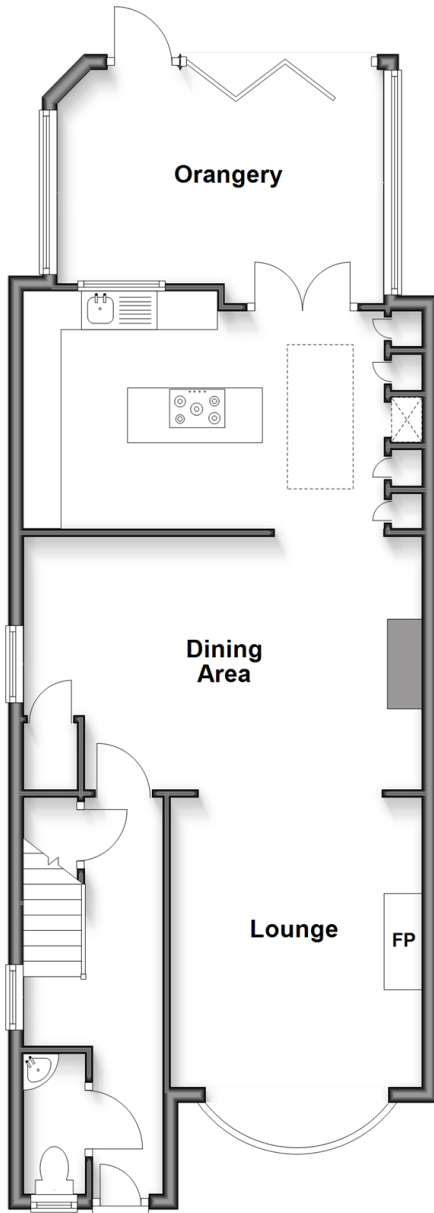
Off Road Parking

Double Length Garage

Rear Garden

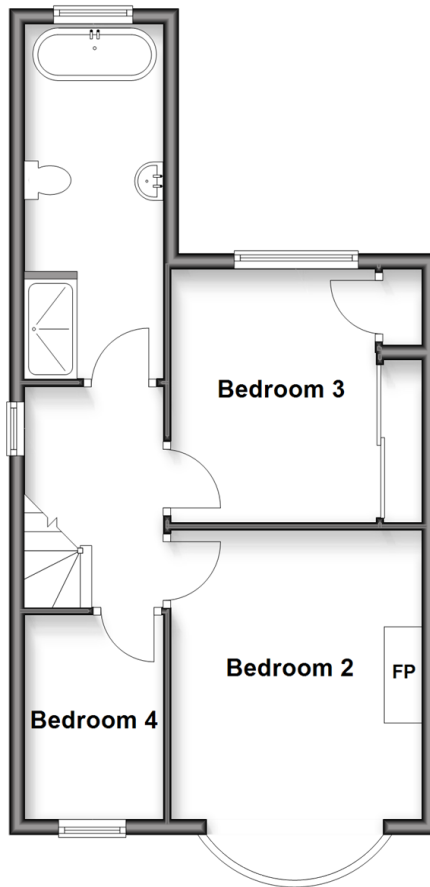
Ground Floor

Approx. 69.7 sq. metres (750.3 sq. feet)



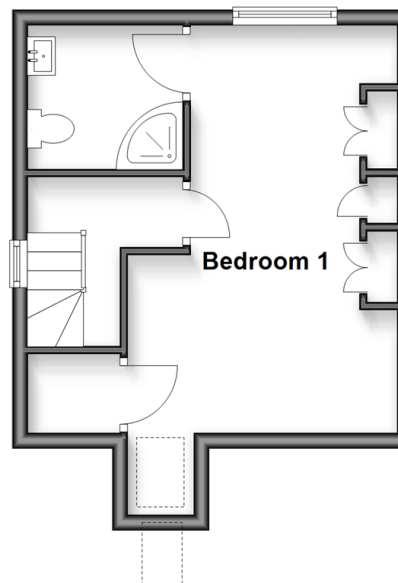
First Floor

Approx. 44.0 sq. metres (473.7 sq. feet)



Second Floor

Approx. 26.9 sq. metres (289.8 sq. feet)





Main features

- Extended and improved semi detached family home close to Hornchurch Town Centre
- Extended & luxurious four piece family bathroom with double shower cubicle
- High specification kitchen with fitted appliances & Corian work surfaces
- Large immaculate rear garden
- Double length garage and off road parking



Nearest Schools

Primary Schools: Langtons Junior School 0.1 miles, Towers Junior School 0.5 miles, Hacton Primary 0.8 miles
Secondary Schools: Emerson Park School 0.9 miles, Abbs Cross Academy 1.0 miles, Hornchurch High School 1.0 miles



Transport Information

Train Stations: Emerson Park 0.3 miles, Upminster Bridge 0.7 miles, Hornchurch 0.7 miles, Gidea Park 1.2 miles, Upminster 1.3 miles



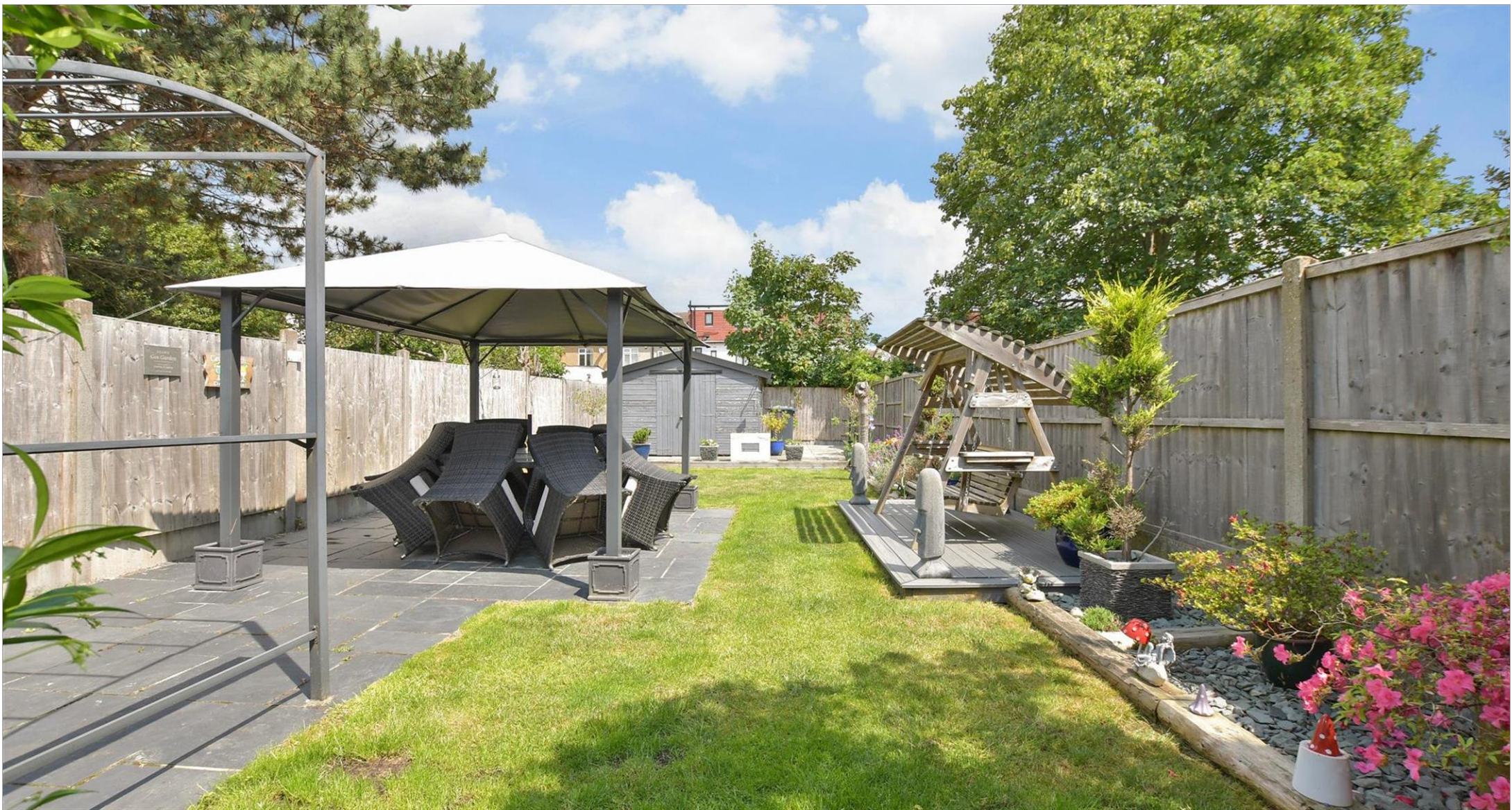
Address

Glebe Way, Hornchurch, Essex, RM11



Directions

For directions to this property please contact us.



Call Hornchurch Branch 01708 437777 ■ douglasallen.co.uk



- A private rental licensing scheme applies to some properties in this area, please contact us before proceeding
- Appliances & services are untested, dimensions are approximate and floor plans are not to scale

- Legal advice should be taken to verify fixtures/fittings, planning, alterations and/or lease details
- Through a Homewise Home For Life Plan people aged 60+ can secure this property for up to 59% less, by purchasing a Lifetime Lease.



51916199/20250612/CC1/DT