



Guide Price

£525,000

Freehold

4x  1x  2x 

**Coleridge Road, Heaton
Grange, Romford, Essex,
RM3**

OVER 60?

Secure this property
for up to **59% less!**

 **DOUGLAS
ALLEN**
Helping you move forwards



Main features

- Detached chalet bungalow with potential to extend STPP
- Integral garage & off road parking
- Summer house
- No onward chain
- Situated in a convenient location for A12, A127 & M25 road links

Accommodation

GROUND FLOOR

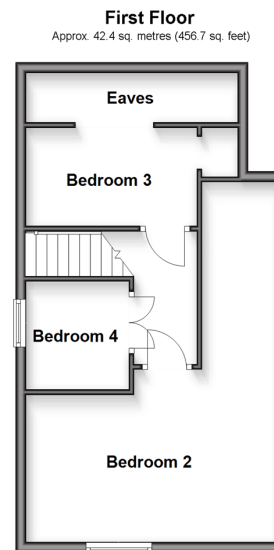
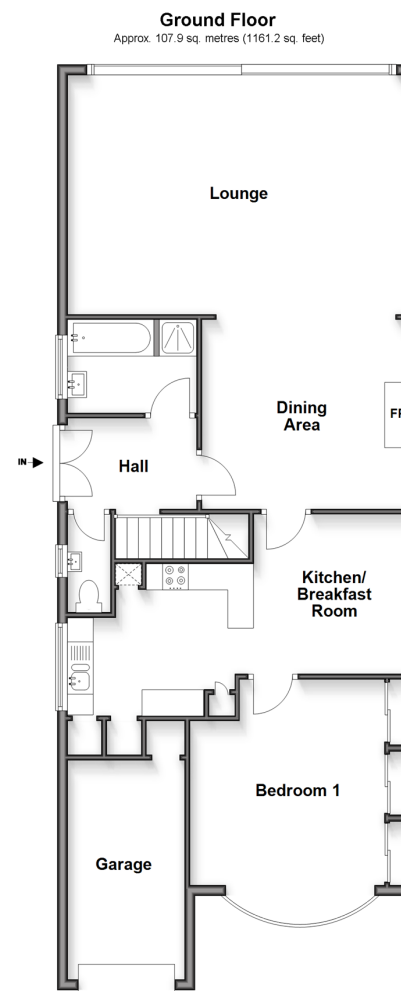
Hallway
Bathroom
Kitchen/Breakfast Room
Lounge
Dining Area
Bedroom 1

FIRST FLOOR

Landing
Bedroom 2
Bedroom 3
Bedroom 4

OUTSIDE

Rear Garden
Off Road Parking



Call Hornchurch - 01708 437777 ■ douglasallen.co.uk

- A private rental licensing scheme applies to some properties in this area, please contact us before proceeding
- Legal advice should be taken to verify fixtures/fittings, planning, alterations and/or lease details
- Appliances & services are untested, dimensions are approximate and floor plans are not to scale
- Through a Homewise Home For Life Plan people aged 60+ can secure this property for up to 59% less, by purchasing a Lifetime Lease.