



OVER 60?

Secure this property
for up to **59% less!**

Guide Price
£260,000

Leasehold

2x  1x  1x 

**Berry Close,
Hornchurch, Essex,
RM12**

 **DOUGLAS
ALLEN**
Helping you move forwards



Main features

- Great size first floor flat with a 900 plus year lease
- Large lounge/diner
- Quiet cul-de-sac location
- Close to Stations, shops, Hornchurch Country Park & shops
- Well kept communal grounds and parking

Accommodation

FIRST FLOOR

Hallway

Lounge/Diner: 18'3 x 10'3 (5.57m x 3.13m)

Kitchen: 8'2 x 7'5 (2.49m x 2.26m)

Bedroom 1: 11'2 x 8'4 (3.41m x 2.54m)

Dressing Area

Bedroom 2: 8'9 x 5'8 (2.67m x 1.73m)

Bathroom

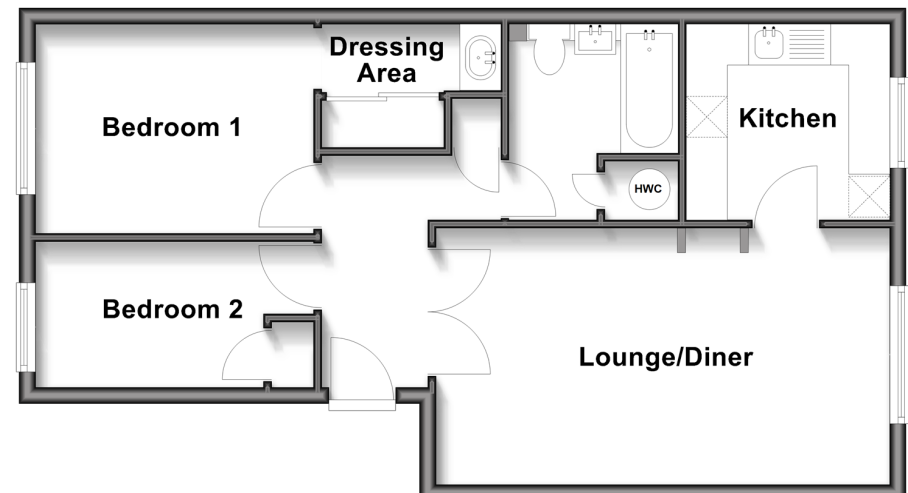
OUTSIDE

Communal Garden

Allocated Parking

First Floor

Approx. 52.8 sq. metres (568.4 sq. feet)



Call Hornchurch - 01708 437777 ■ douglasallen.co.uk

- A private rental licensing scheme applies to some properties in this area, please contact us before proceeding
- Appliances & services are untested, dimensions are approximate and floor plans are not to scale

- Legal advice should be taken to verify fixtures/fittings, planning, alterations and/or lease details
- Through a Homewise Home For Life Plan people aged 60+ can secure this property for up to 59% less, by purchasing a Lifetime Lease.