



Price
£450,000

Freehold

3x  2x  1x 

**Benets Road,
Hornchurch, Essex,
RM11**

OVER 60?

Secure this property
for up to **59% less!**

 **DOUGLAS
ALLEN**
Helping you move forwards



Main features

- Extended terraced family home with modern Kitchen/Diner
- Ground floor shower room
- Detached double garage to rear and off road parking to front
- Prime location for Hornchurch & Upminster Town Centres
- Situated less than a mile to Upminster Bridge Station

Accommodation

GROUND FLOOR

Hallway

Shower Room

Lounge: 12'5 x 10'11 (3.79m x 3.33m)

Dining Area: 11'1 x 10'11 (3.38m x 3.33m)

Kitchen/Breakfast Area: 14'4 (4.37m) x 12'3 (3.74m) narrowing to 8'1 (2.47m)

FIRST FLOOR

Landing

Bedroom 1: 12'5 x 9'9 (3.79m x 2.97m)

Bedroom 2: 11'1 x 10'2 (3.38m x 3.10m)

Bedroom 3: 7'4 x 6'8 (2.24m x 2.03m)

Bathroom

OUTSIDE

Off Road Parking

Double Garage: 21'0 x 16'1 (6.41m x 4.91m)

Rear Garden

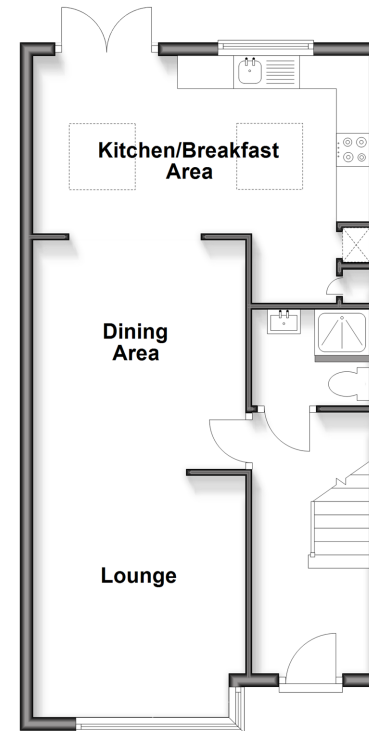
Garage

Approx. 31.1 sq. metres (335.0 sq. feet)



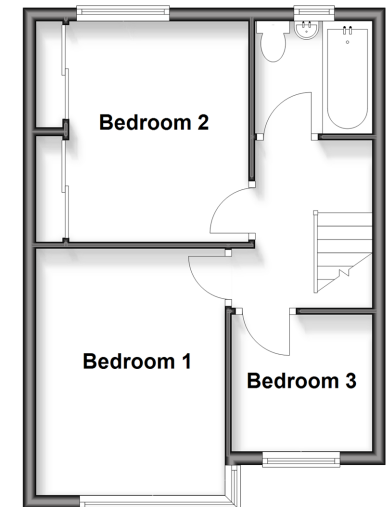
Ground Floor

Approx. 49.7 sq. metres (535.2 sq. feet)



First Floor

Approx. 35.2 sq. metres (378.6 sq. feet)



Call Hornchurch - 01708 437777 ■ douglasallen.co.uk

- A private rental licensing scheme applies to some properties in this area, please contact us before proceeding
- Legal advice should be taken to verify fixtures/fittings, planning, alterations and/or lease details
- Appliances & services are untested, dimensions are approximate and floor plans are not to scale
- Through a Homewise Home For Life Plan people aged 60+ can secure this property for up to 59% less, by purchasing a Lifetime Lease.



51916374/20250322/CC1/DT