



**OVER 60?**

Secure this property  
for up to **59% less!**

**Price**

**£250,000**

**Leasehold**

2x  1x  1x 

**Palliser Drive, Rainham,  
Essex, RM13**

 **DOUGLAS  
ALLEN**  
Helping you move forwards





## Main features

- Ground floor well presented home with communal garden
- Secure entry phone system
- Allocated parking space and visitors parking
- Conveniently located for A13 & M25 road links & Lakeside
- Situated less than half a mile to Rainham Station

## Accommodation

### GROUND FLOOR

Hallway

Lounge/Dining Room: 14'5 x 13'0 (4.40m x 3.97m)

Kitchen: 9'9 x 6'7 (2.97m x 2.01m)

Bedroom 1: 10'6 x 9'2 (3.20m x 2.80m)

Bedroom 2: 10'5 x 6'4 (3.18m x 1.93m)

Bathroom

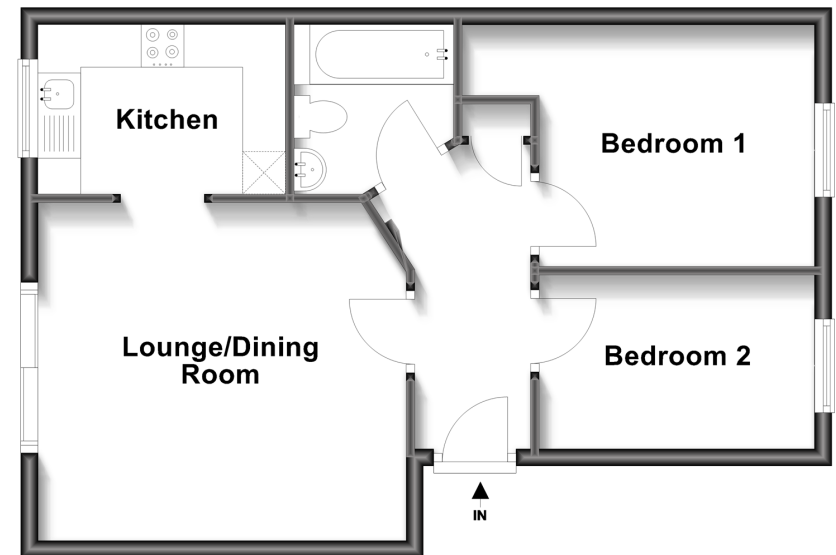
### OUTSIDE

Communal garden

Allocated Parking

Visitors Parking

**Ground Floor**  
Approx. 49.8 sq. metres (536.1 sq. feet)



**Call Hornchurch - 01708 437777 ■ [douglasallen.co.uk](http://douglasallen.co.uk)**

- A private rental licensing scheme applies to some properties in this area, please contact us before proceeding
- Appliances & services are untested, dimensions are approximate and floor plans are not to scale

- Legal advice should be taken to verify fixtures/fittings, planning, alterations and/or lease details
- Through a Homewise Home For Life Plan people aged 60+ can secure this property for up to 59% less, by purchasing a Lifetime Lease.