



Guide Price
£375,000

Freehold

3x  1x  2x 

**Malvern Road,
Hornchurch, Essex,
RM11**

OVER 60?

Secure this property
for up to **59% less!**

 **DOUGLAS
ALLEN**
Helping you move forwards



Main features

- Victorian Cottage style home with character features
- Offered with no onward chain
- Separate lounge and dining rooms
- Great location close to amenities
- Situated less than a mile to Romford Town Centre & Train Station

Accommodation

GROUND FLOOR

Lounge: 13'5 x 12'2 (4.09m x 3.71m)

Dining Room: 12'3 x 12'1 (3.74m x 3.69m)

Kitchen: 11'6 x 6'6 (3.51m x 1.98m)

Bathroom

FIRST FLOOR

Landing

Bedroom 1: 12'2 x 11'4 (3.71m x 3.46m)

Bedroom 2: 12'2 x 11'4 (3.71m x 3.46m)

Bedroom 3: 10'1 x 6'6 (3.08m x 1.98m)

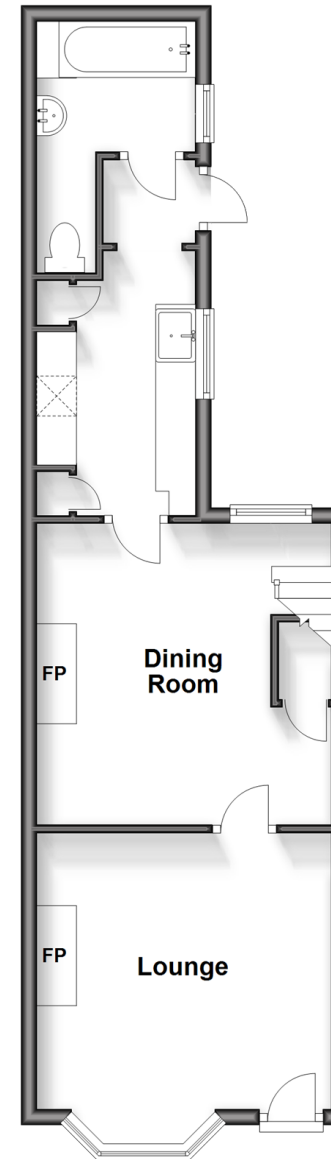
OUTSIDE

Front Garden

Rear Garden

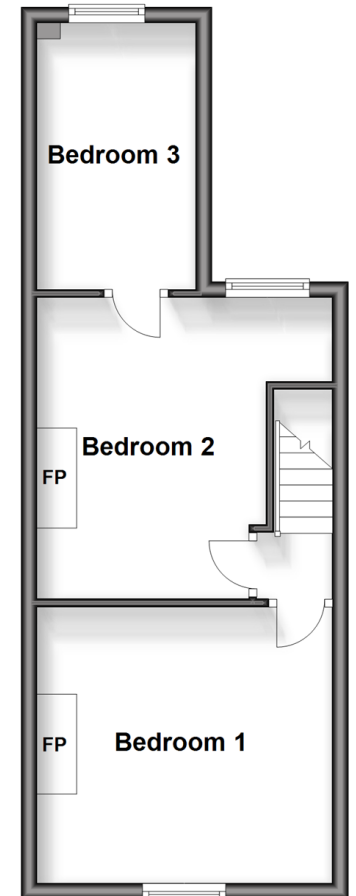
Ground Floor

Approx. 39.9 sq. metres (429.8 sq. feet)



First Floor

Approx. 34.0 sq. metres (366.4 sq. feet)



Call Hornchurch - 01708 437777 ■ douglasallen.co.uk

- A private rental licensing scheme applies to some properties in this area, please contact us before proceeding
- Legal advice should be taken to verify fixtures/fittings, planning, alterations and/or lease details
- Appliances & services are untested, dimensions are approximate and floor plans are not to scale
- Through a Homewise Home For Life Plan people aged 60+ can secure this property for up to 59% less, by purchasing a Lifetime Lease.



51916324/20250522/CC1/DT