



OVER 60?

Secure this property
for up to **59% less!**

Price

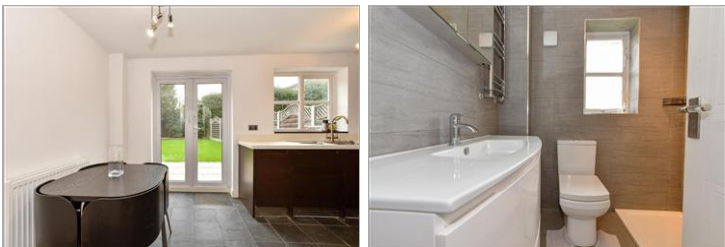
£450,000

Freehold

3x  1x  2x 

**Knightswood Road,
Rainham, Essex, RM13**

 **DOUGLAS
ALLEN**
Helping you move forwards



Main features

- Semi detached home offered with no onward chain
- Ground floor cloakroom
- Garage & off road parking
- Recently renewed flooring & carpets
- Situated approximately half a mile to Rainham Station

Accommodation

GROUND FLOOR

Hallway
Cloakroom
Lounge: 17'7 x 14'5 (5.36m x 4.40m)
Kitchen/Dining Room: 14'9 x 9'6 (4.50m x 2.90m)

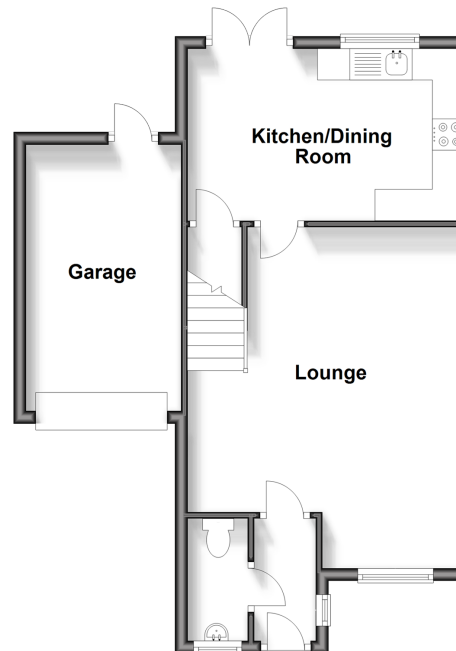
FIRST FLOOR

Bedroom 1: 11'8 x 8'5 (3.56m x 2.57m)
Bedroom 2: 10'5 x 8'0 (3.18m x 2.44m)
Bedroom 3: 8'7 x 5'7 (2.62m x 1.70m)
Shower Room

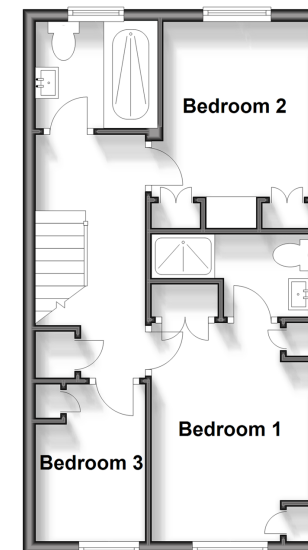
OUTSIDE

Rear Garden
Off Road Parking
Garage

Ground Floor
Approx. 39.1 sq. metres (421.4 sq. feet)



First Floor
Approx. 36.8 sq. metres (395.6 sq. feet)



Call Hornchurch - 01708 437777 ■ douglasallen.co.uk

- A private rental licensing scheme applies to some properties in this area, please contact us before proceeding
- Legal advice should be taken to verify fixtures/fittings, planning, alterations and/or lease details
- Appliances & services are untested, dimensions are approximate and floor plans are not to scale
- Through a Homewise Home For Life Plan people aged 60+ can secure this property for up to 59% less, by purchasing a Lifetime Lease.