



Price
£380,000

Freehold

3x  1x  1x 

**Elmdon Road, South
Ockendon, Essex, RM15**

OVER 60?

Secure this property
for up to **59% less!**

 **DOUGLAS
ALLEN**
Helping you move forwards



Main features

- Immaculately presented mid terraced home
- Modern fitted kitchen
- Off road parking & garage
- Situated in a quiet cul de sac
- Conveniently located less than a mile to Ockendon Station

Accommodation

GROUND FLOOR

Porch

Lounge/Dining Area: 23'3 x 15'3 (7.09m x 4.65m)

Kitchen: 8'4 x 7'9 (2.54m x 2.36m)

FIRST FLOOR

Landing

Bedroom 1: 11'6 x 8'3 (3.51m x 2.52m)

Bedroom 2: 10'8 x 9'3 (3.25m x 2.82m)

Bedroom 3: 7'7 x 6'9 (2.31m x 2.06m)

Bathroom

OUTSIDE

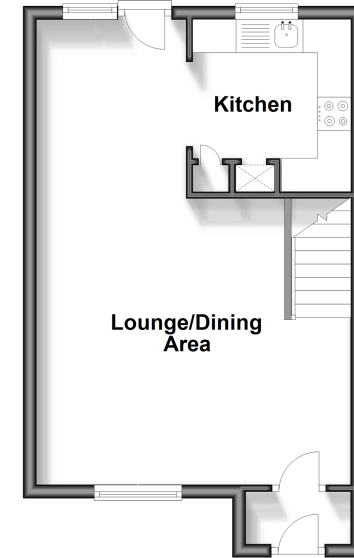
Off Road Parking

Garage

Rear Garden

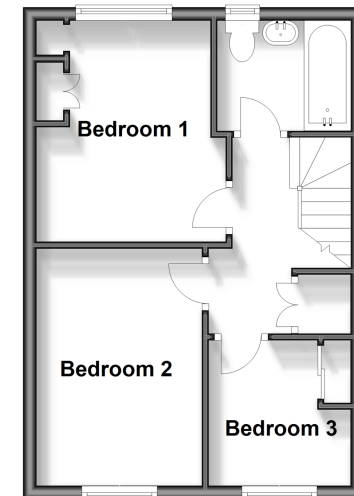
Ground Floor

Approx. 34.3 sq. metres (368.8 sq. feet)



First Floor

Approx. 32.9 sq. metres (353.6 sq. feet)



Call Hornchurch - 01708 437777 ■ douglasallen.co.uk

- A private rental licensing scheme applies to some properties in this area, please contact us before proceeding
- Legal advice should be taken to verify fixtures/fittings, planning, alterations and/or lease details
- Appliances & services are untested, dimensions are approximate and floor plans are not to scale
- Through a Homewise Home For Life Plan people aged 60+ can secure this property for up to 59% less, by purchasing a Lifetime Lease.



51916258/20241010/CC1/DT