



OVER 60?

Secure this property
for up to **59% less!**

Price

£265,000

Leasehold

2x  1x  1x 

**Barnard House,
Nightingale Crescent,
Harold Wood, Essex,
RM3**

 **DOUGLAS
ALLEN**
Helping you move forwards



Main features

- First floor secure apartment with modern Decoration throughout
- Secure entry phone system
- Allocated parking space
- Good location for schools
- Situated less than half a mile to Harold Wood Station (Elizabeth Line)

Accommodation

FIRST FLOOR

Hallway

Lounge/Diner: 14'11 x 13'9 (4.55m x 4.19m)

Kitchen: 10'0 x 5'7 (3.05m x 1.70m)

Bedroom 1 : 12'11 x 8'2 (3.94m x 2.49m)

Bedroom 2: 12'3 (3.74m) x 9'4 (2.85m) narrowing to 7'11 (2.41m)

Bathroom

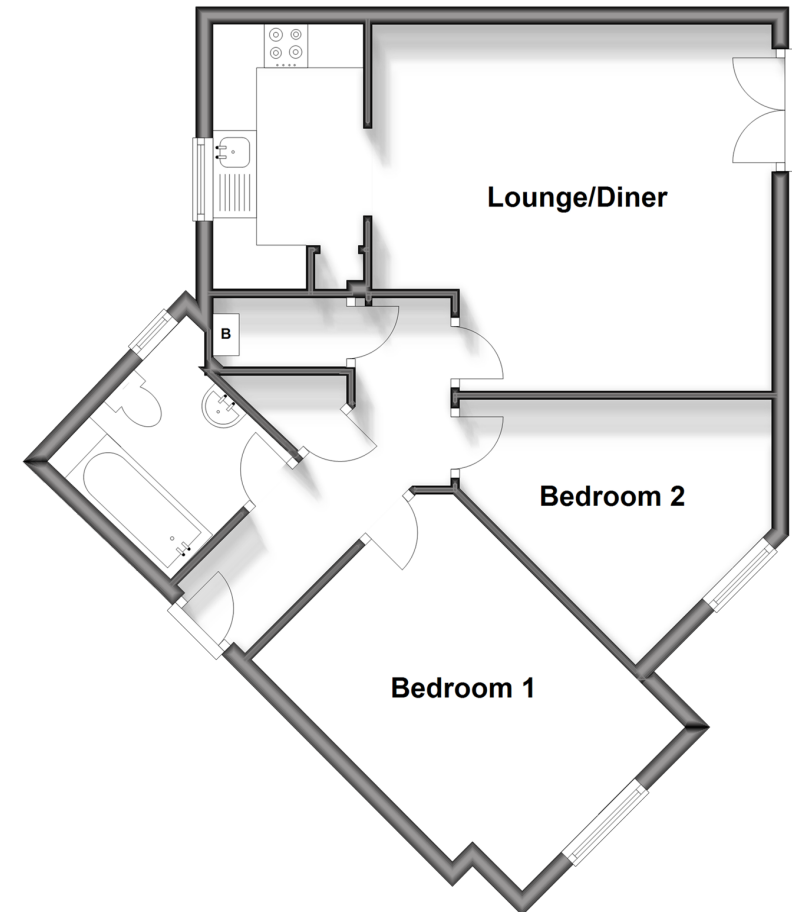
OUTSIDE

Allocated parking

Communal Gardens

First Floor

Approx. 56.5 sq. metres (608.2 sq. feet)



Call Hornchurch - 01708 437777 ■ douglasallen.co.uk

- A private rental licensing scheme applies to some properties in this area, please contact us before proceeding
- Legal advice should be taken to verify fixtures/fittings, planning, alterations and/or Lease details
- Appliances & services are untested, dimensions are approximate and floor plans are not to scale
- Through a Homewise Home For Life Plan people aged 60+ can secure this property for up to 59% less, by purchasing a Lifetime Lease.
- This property has been underpinned, please contact us before proceeding



51916249/20241001/CC1/DT