



Guide Price
£250,000

Leasehold

2x  1x  1x 

**Chiddicks Court, Arcany
Road, South Ockendon,
Essex, RM15**

OVER 60?

Secure this property
for up to **59% less!**

 **DOUGLAS
ALLEN**
Helping you move forwards



Main features

- Modern ground floor purpose built flat with a long lease
- High quality finish throughout
- Modern kitchen and bathroom
- Patio area
- Communal Gardens
- Allocated parking space
- Less than a mile to Ockendon Station

Accommodation

GROUND FLOOR

Hallway

Bedroom 1 : 11'5 x 8'9 (3.48m x 2.67m)

Bedroom 2: 13'9 x 9'3 (4.19m x 2.82m)

Bathroom : 7'8 x 5'6 (2.34m x 1.68m)

Living Area: 15'8 x 15'5 (4.78m x 4.70m)

OUTSIDE

Patio Area

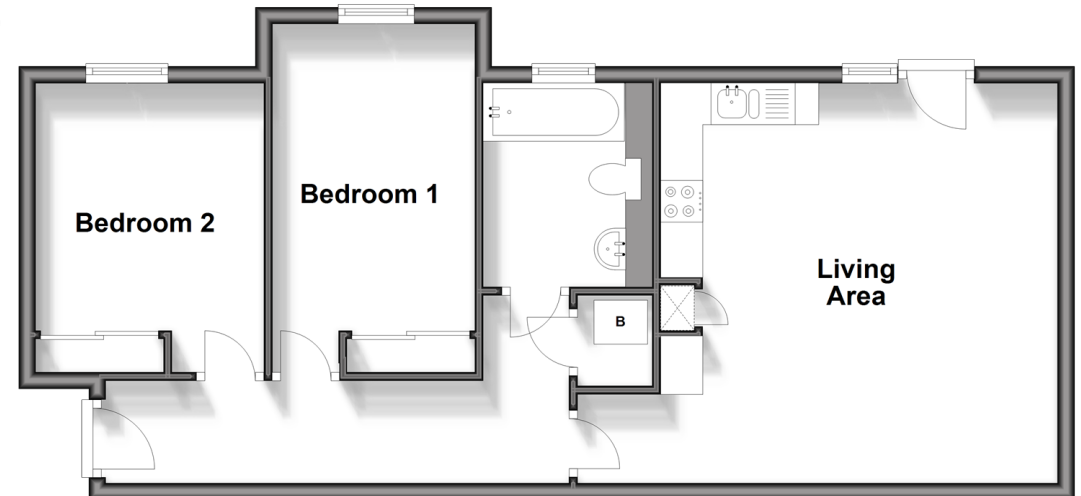
Communal gardens

Secure bike store

Allocated parking space

Ground Floor

Approx. 59.0 sq. metres (635.1 sq. feet)



Call Hornchurch - 01708 437777 ■ douglasallen.co.uk

- A private rental licensing scheme applies to some properties in this area, please contact us before proceeding
- Appliances & services are untested, dimensions are approximate and floor plans are not to scale

- Legal advice should be taken to verify fixtures/fittings, planning, alterations and/or lease details
- Through a Homewise Home For Life Plan people aged 60+ can secure this property for up to 59% less, by purchasing a Lifetime Lease.