



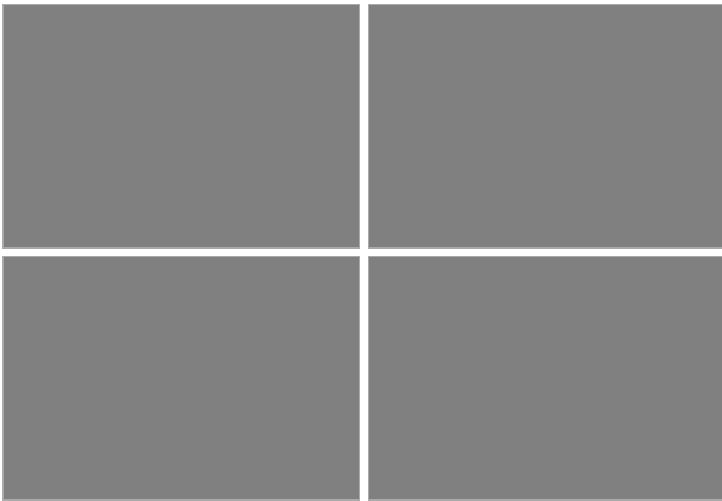
Price

£500,000

Freehold

3x  1x  1x 

**Mowbrays Road,
Romford, Essex, RM5**



Main features

- A detached and recently refurbished bungalow in a popular location
- Chain free
- Detached garage
- Close to local amenities
- Large open plan kitchen/ diner with potential to extend STPP

Accommodation

GROUND FLOOR

Entrance Hall

Bedroom 1: 13'9 x 11'6 (4.19m x 3.51m)

Bedroom 2: 8'6 x 8'5 (2.59m x 2.57m)

Bedroom 3: 9'6 x 7'6 (2.90m x 2.29m)

Family Bathroom

Kitchen/Diner: 27'1 x 14'4 (8.26m x 4.37m)

Living Area: 26'11 x 8'7 (8.21m x 2.62m)

OUTSIDE

Garage

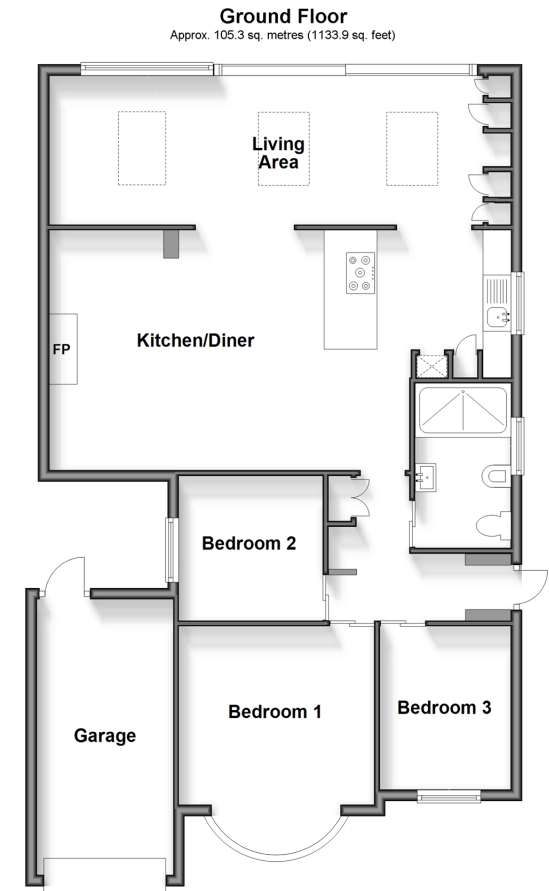
Driveway

Front Garden

Rear garden

Call Hornchurch - 01708 437777 ■ douglasallen.co.uk

- A private rental licensing scheme applies to some properties in this area, please contact us before proceeding
- Legal advice should be taken to verify fixtures/fittings, planning, alterations and/or lease details
- Appliances & services are untested, dimensions are approximate and floor plans are not to scale



51915866/20240716/CC1/TF