



Price
£650,000

Freehold

3x  2x  2x 

**Upper Brentwood Road,
Romford, Essex, RM2**

OVER 60?

Secure this property
for up to **59% less!**

 **DOUGLAS
ALLEN**
Helping you move forwards

Accommodation

GROUND FLOOR

Hallway

Shower Room: 6'5 x 6'0 (1.96m x 1.83m)

Lounge : 19'0 x 9'10 (5.80m x 3.00m)

Kitchen: 13'10 x 10'0 (4.22m x 3.05m)

Sitting Area: 10'7 x 8'3 (3.23m x 2.52m)

Family Area: 15'0 x 11'6 (4.58m x 3.51m)

Conservatory: 14'4 x 13'8 (4.37m x 4.17m)

FIRST FLOOR

Landing

Bedroom 1: 13'4 x 11'7 (4.07m x 3.53m)

Bedroom 2: 11'5 x 8'9 (3.48m x 2.67m)

Bedroom 3: 10'5 x 8'0 (3.18m x 2.44m)

Bathroom

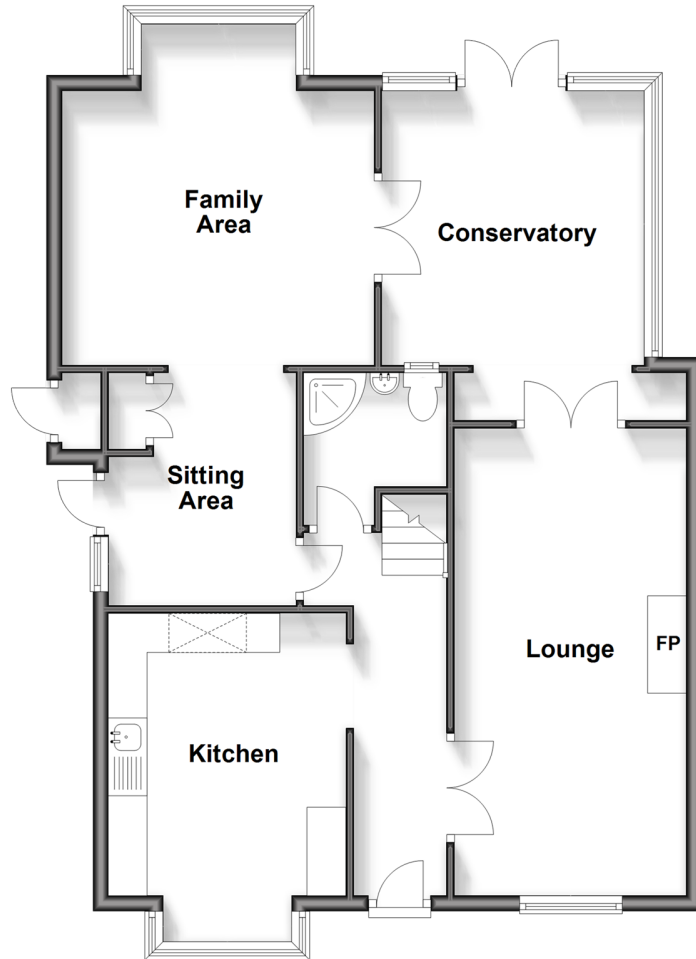
OUTSIDE

Rear Garden

Off Road Parking

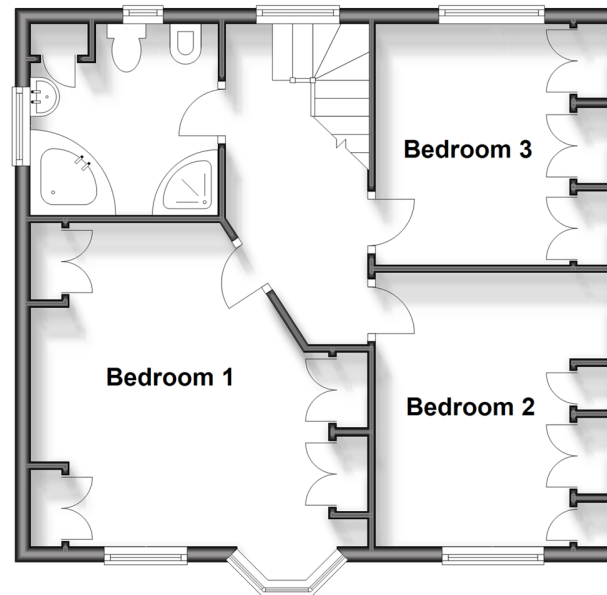
Ground Floor

Approx. 76.5 sq. metres (823.4 sq. feet)



First Floor

Approx. 50.1 sq. metres (539.5 sq. feet)





Main features

- Lovely bright and spacious semi detached home with fitted kitchen
- Commodious conservatory
- Ample off road parking
- Great size landscaped rear garden
- Potential to extend Subject to Planning Permissions



Nearest Schools

Primary Schools: Ardleigh Green Junior School 0.4 miles, Gidea Park Primary 0.8 miles, Squirrels Heath Junior School 0.8 miles

Secondary Schools: The Royal Liberty School 0.1 miles,



Transport Information

Train Stations: Gidea Park 0.4 miles, Harold Wood 1.0 miles, Emerson Park 1.2 miles



Address

Upper Brentwood Road, Romford, Essex, RM2



Directions

For directions to this property please contact us.



Call Hornchurch Branch 01708 437777 ■ douglasallen.co.uk



- A private rental licensing scheme applies to some properties in this area, please contact us before proceeding
- Appliances & services are untested, dimensions are approximate and floor plans are not to scale

- Legal advice should be taken to verify fixtures/fittings, planning, alterations and/or lease details
- Through a Homewise Home For Life Plan people aged 60+ can secure this property for up to 59% less, by purchasing a Lifetime Lease.



51916091/20240809/MF/TF