



**Price**  
**£435,000**

**Freehold**

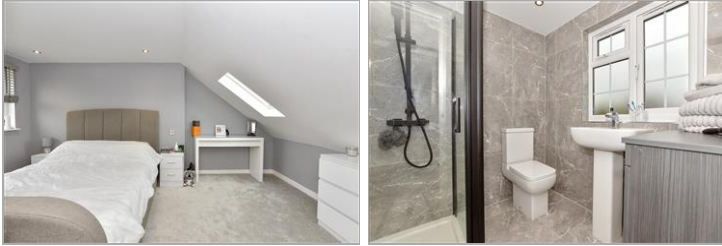
3x  2x  1x 

**Mungo Park Road,  
Rainham, Essex, RM13**

**OVER 60?**

Secure this property  
for up to **59% less!**

 **DOUGLAS  
ALLEN**  
Helping you move forwards



## Main features

- End of terraced family home extended into the loft
- En-suite to Bedroom 1
- Outbuilding
- Off road parking
- Situated less than a mile to Elm Park Station & amenities

## Accommodation

### GROUND FLOOR

Porch  
Hallway  
Lounge/Dining Room: 21'6 (6.56m) x 11'5 (3.48m) narrowing to 8'6 (2.59m)  
Kitchen: 9'2 x 8'8 (2.80m x 2.64m)

### FIRST FLOOR

Landing  
Bedroom 2: 11'5 x 8'2 (3.48m x 2.49m)  
Bedroom 3: 9'7 x 9'7 (2.92m x 2.92m)  
Shower Room

### SECOND FLOOR

Landing  
Bedroom 1: 15'3 x 9'7 (4.65m x 2.92m)  
En-Suite

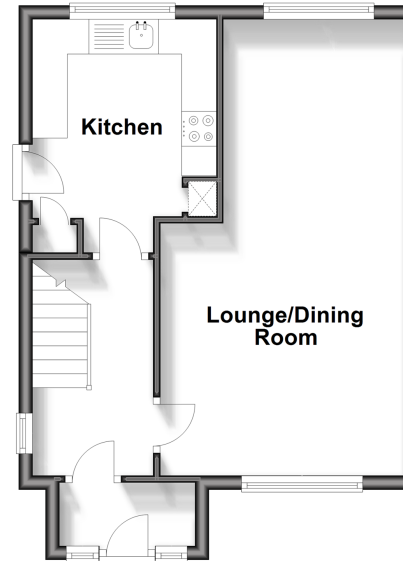
### OUTSIDE

Off Road Parking  
Rear Garden  
Out Building: 9'2 x 8'8 (2.80m x 2.64m) plus 7'9 x 8'8 (2.36m x 2.64m)

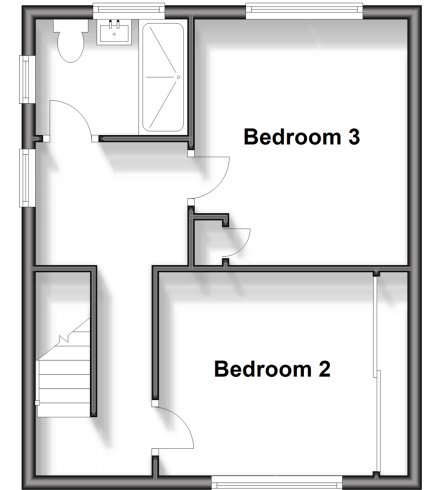
**Second Floor**  
Approx. 24.5 sq. metres (263.9 sq. feet)



**Ground Floor**  
Approx. 37.0 sq. metres (398.5 sq. feet)



**First Floor**  
Approx. 35.1 sq. metres (377.3 sq. feet)



**Call Hornchurch - 01708 437777 ■ [douglasallen.co.uk](http://douglasallen.co.uk)**

- A private rental licensing scheme applies to some properties in this area, please contact us before proceeding
- Legal advice should be taken to verify fixtures/fittings, planning, alterations and/or lease details
- Appliances & services are untested, dimensions are approximate and floor plans are not to scale
- Through a Homewise Home For Life Plan people aged 60+ can secure this property for up to 59% less, by purchasing a Lifetime Lease.



51916066/20241015/CC1/DT