



Price
£365,000

Freehold

3x  1x  1x 

**Taunton Road, Romford,
Essex, RM3**

OVER 60?

Secure this property
for up to **59% less!**

 **DOUGLAS
ALLEN**
Helping you move forwards



Main features

- **Good sized family home in great condition**
- **Ground floor cloakroom**
- **Off road parking**
- **Low maintenance rear garden**
- **Ideal first time purchase or investment property**

Accommodation

GROUND FLOOR

Hallway
 Kitchen/Breakfast Room: 14'9 x 7'8 (4.50m x 2.34m)
 Pantry
 Lounge/Dining Room: 13'8 x 12'3 (4.17m x 3.74m)
 Cloakroom

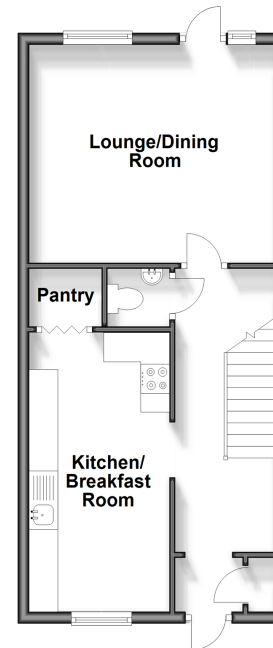
FIRST FLOOR

Landing
 Bedroom 1: 13'7 x 9'5 (4.14m x 2.87m)
 Bedroom 2: 12'6 x 6'9 (3.81m x 2.06m)
 Bedroom 3: 9'6 x 6'6 (2.90m x 1.98m)
 Bathroom
 W.C.

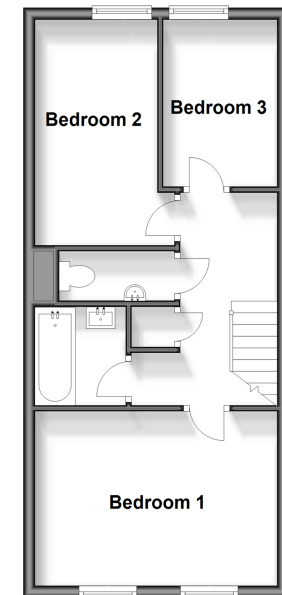
OUTSIDE

Rear Garden
 Off Road Parking

Ground Floor
 Approx. 41.4 sq. metres (445.2 sq. feet)



First Floor
 Approx. 40.7 sq. metres (438.3 sq. feet)



Call Hornchurch - 01708 437777 ■ douglasallen.co.uk

- This property is not standard construction which could affect mortgage lending, please contact us before proceeding
- Legal advice should be taken to verify fixtures/fittings, planning, alterations and/or lease details
- Through a Homewise Home For Life Plan people aged 60+ can secure this property for up to 59% less, by purchasing a Lifetime Lease.

- A private rental licensing scheme applies to some properties in this area, please contact us before proceeding
- Appliances & services are untested, dimensions are approximate and floor plans are not to scale