



**Offers In
Excess Of
£600,000
Freehold**

4x  2x  2x 

**Hornminster Glen,
Hornchurch, Essex,
RM11**

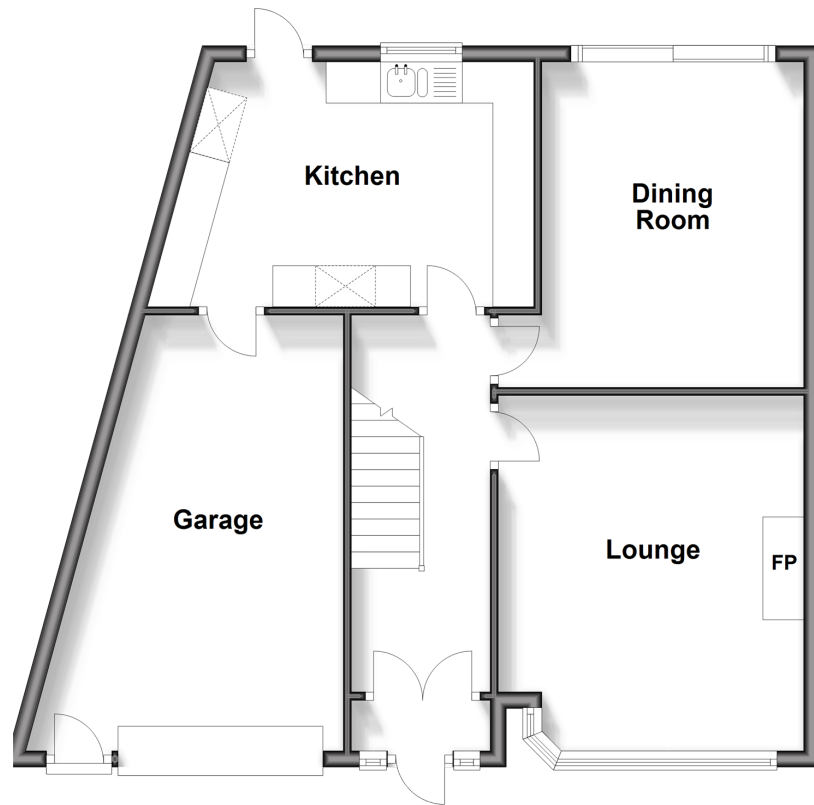
OVER 60?

Secure this property
for up to **59% less!**

 **DOUGLAS
ALLEN**
Helping you move forwards

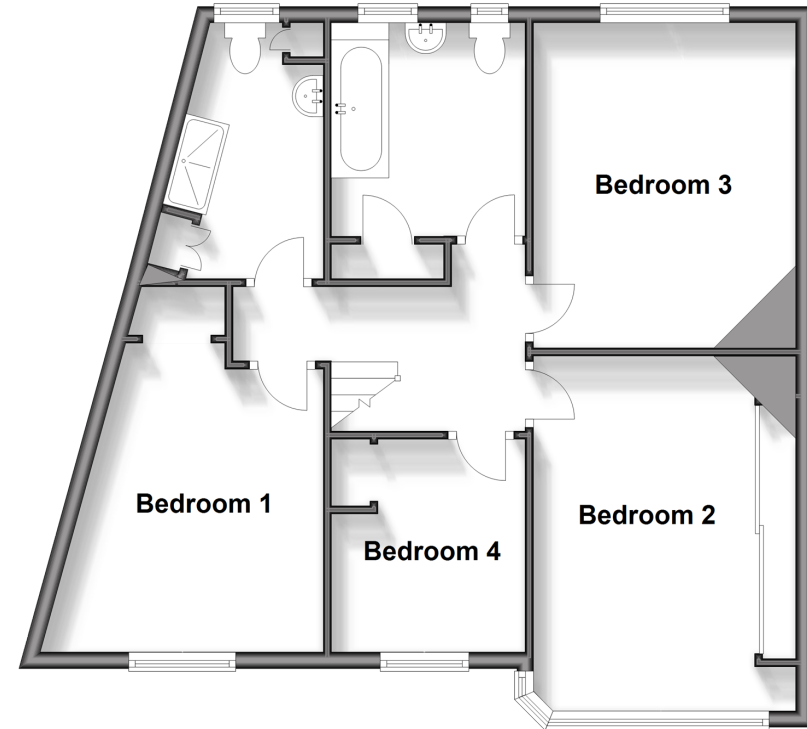
Ground Floor

Approx. 69.6 sq. metres (749.0 sq. feet)



First Floor

Approx. 64.9 sq. metres (698.9 sq. feet)



Accommodation

GROUND FLOOR

Porch
Hallway
Lounge: 14'2 x 12'4 (4.32m x 3.76m)
Dining Room: 13'0 x 12'1 (3.97m x 3.69m)
Kitchen: 15'8 x 9'9 (4.78m x 2.97m)

FIRST FLOOR

Landing
Bedroom 1: 14'6 x 11'7 (4.42m x 3.53m)
En-Suite
Bedroom 2: 14'6 x 10'6 (4.42m x 3.20m)
Bedroom 3: 12'11 x 10'6 (3.94m x 3.20m)
Bedroom 4: 8'7 x 7'9 (2.62m x 2.36m)
Bathroom

OUTSIDE

Rear Garden
Off Road Parking
Garage: 16'9 x 12'10 (5.11m x 3.91m)



Main features

- Well presented extended semi detached family home in a cul de sac location
- No onward chain
- En-Suite to bedroom one
- Garage and ample off road parking
- Upminster Bridge Station is conveniently located at the end of the road
- Situated in a good location for local amenities, primary & secondary schools



Nearest Schools

St Joseph's Catholic Primary 0.5 miles, Branfil Primary 0.5 miles, Upminster Junior 0.6 miles, Sacred Heart of Mary Girls' 0.3 miles, Emerson Park 0.7 miles, Coopers' Company and Coborn School 1.0 miles



Transport Information

Train Stations: Upminster Bridge 0.1 miles, Upminster 0.5 miles, Hornchurch 0.8 miles, Emerson Park 1.0 miles, Gidea Park 1.9 miles



Address

Hornminster Glen, Hornchurch, Essex, RM11



Directions

For directions to this property please contact us.



Call Hornchurch Branch 01708 437777 ■ douglasallen.co.uk



- A private rental licensing scheme applies to some properties in this area, please contact us before proceeding
- Appliances & services are untested, dimensions are approximate and floor plans are not to scale

- Legal advice should be taken to verify fixtures/fittings, planning, alterations and/or lease details
- Through a Homewise Home For Life Plan people aged 60+ can secure this property for up to 59% less, by purchasing a Lifetime Lease.



51915961/20240418/CC1/DT