



**Price**

**£230,000**

**Leasehold**

1x  1x  1x 

**Astra Court East, Astra  
Close, Hornchurch,  
Essex, RM12**

**OVER 60?**

Secure this property  
for up to **59% less!**

 **DOUGLAS  
ALLEN**  
Helping you move forwards



## Main features

- Offered with no onward chain ground floor flat with long lease
- Recently insulated and replastered
- New heating & ventilation system
- Car park and communal gardens
- Situated less than a mile to Elm Park Station

## Accommodation

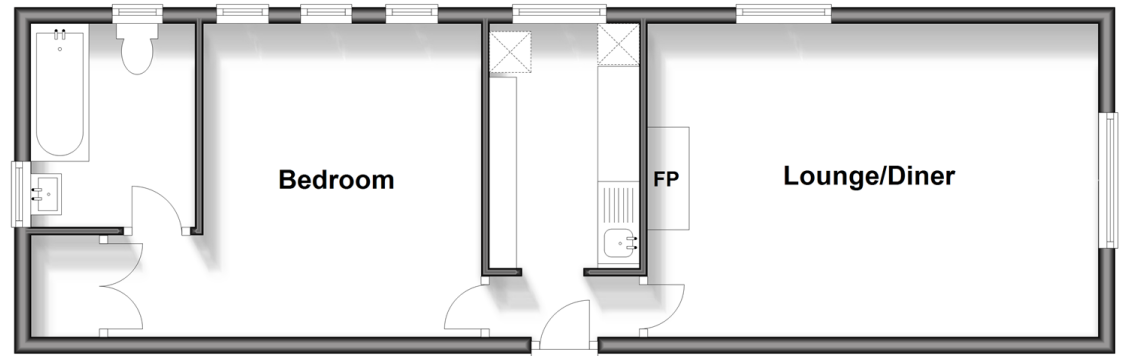
### GROUND FLOOR

- Hallway
- Kitchen: 9'6 x 5'11 (2.90m x 1.80m)
- Lounge/Diner: 17'1 x 12'7 (5.21m x 3.84m)
- Bedroom: 17'7 x 12'7 (5.36m x 3.84m)
- Bathroom

### OUTSIDE

- Communal Garden
- Communal Parking

**Ground Floor**  
Approx. 49.1 sq. metres (528.7 sq. feet)



Call Hornchurch - 01708 437777 ■ [douglasallen.co.uk](http://douglasallen.co.uk)

- A private rental licensing scheme applies to some properties in this area, please contact us before proceeding
- Appliances & services are untested, dimensions are approximate and floor plans are not to scale

- Legal advice should be taken to verify fixtures/fittings, planning, alterations and/or lease details
- Through a Homewise Home For Life Plan people aged 60+ can secure this property for up to 59% less, by purchasing a Lifetime Lease.



51915802/20241007/CC1/DT