



**Price**  
**£525,000**

**Freehold**

3x  1x  2x 

**Osborne Road,  
Hornchurch, Essex,  
RM11**

**OVER 60?**

Secure this property  
for up to **59% less!**

 **DOUGLAS  
ALLEN**  
Helping you move forwards





## Main features

- Well maintained extended semi detached home
- Modern kitchen
- Great location for amenities and less than a mile to 3 Train Stations
- Within catchment to Frances Bardsley School & "outstanding" Towers Infants School

## Accommodation

### GROUND FLOOR

- Porch
- Hallway
- Lounge: 15'0 x 12'0 (4.58m x 3.66m)
- Dining Room: 13'5 x 9'1 (4.09m x 2.77m)
- Kitchen: 13'4 x 9'2 (4.07m x 2.80m)

### FIRST FLOOR

- Landing
- Bedroom 1: 12'1 x 10'0 (3.69m x 3.05m)
- Bedroom 2: 12'0 x 10'0 (3.66m x 3.05m)
- Bedroom 3: 9'6 x 7'0 (2.90m x 2.14m)
- Bathroom

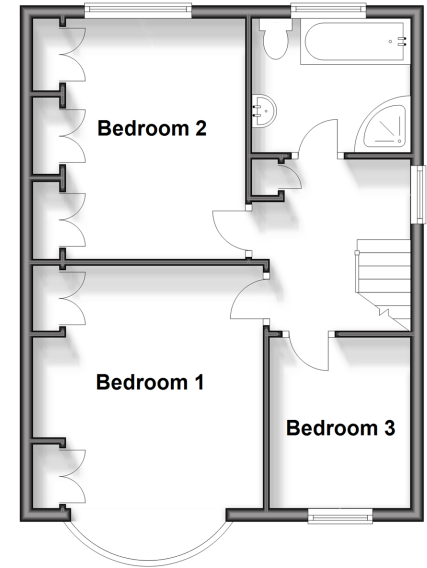
### OUTSIDE

- Rear Garden
- Off Road Parking

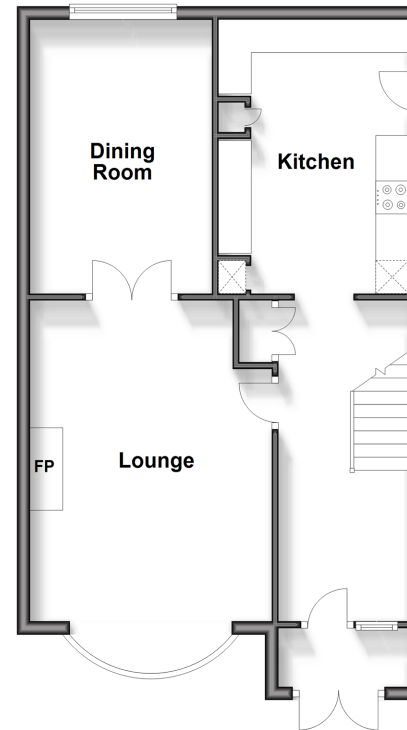
Call Hornchurch - 01708 437777 ■ [douglasallen.co.uk](http://douglasallen.co.uk)

- A private rental licensing scheme applies to some properties in this area, please contact us before proceeding
- Legal advice should be taken to verify fixtures/fittings, planning, alterations and/or lease details
- Appliances & services are untested, dimensions are approximate and floor plans are not to scale
- Through a Homewise Home For Life Plan people aged 60+ can secure this property for up to 59% less, by purchasing a Lifetime Lease.

**First Floor**  
Approx. 43.3 sq. metres (465.7 sq. feet)



**Ground Floor**  
Approx. 55.0 sq. metres (592.2 sq. feet)



51915916/20240108/JC/JC