



Price
£625,000

Freehold

2x  1x  1x 

**Vicarage Road,
Hornchurch, Essex,
RM12**

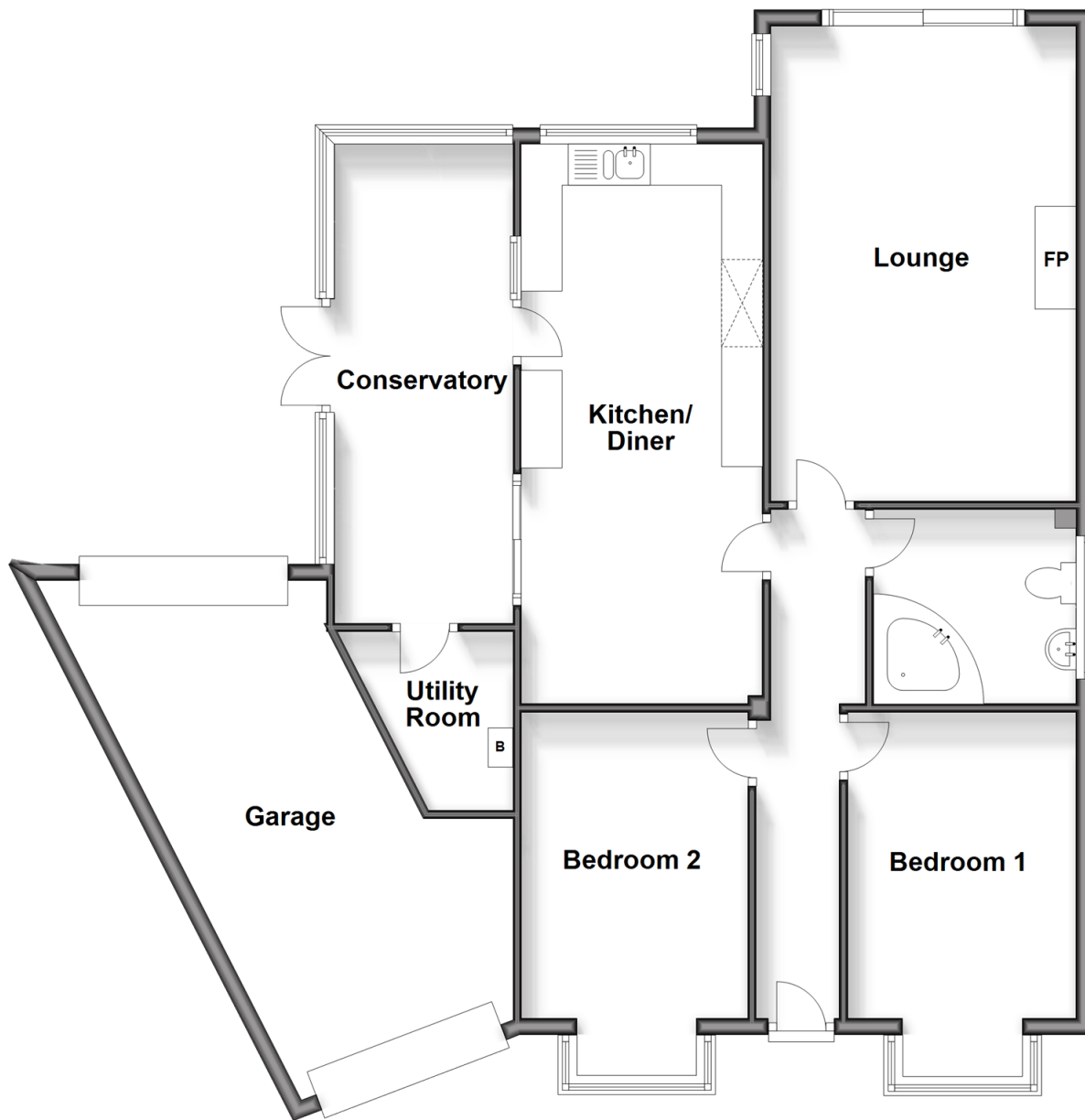
OVER 60?

Secure this property
for up to **59% less!**

 **DOUGLAS
ALLEN**
Helping you move forwards

Ground Floor

Approx. 116.4 sq. metres (1252.4 sq. feet)



Accommodation

GROUND FLOOR

Hallway

Bedroom 1 : 12'0 x 9'1 (3.66m x 2.77m)

Bedroom 2: 12'0 x 9'1 (3.66m x 2.77m)

Bathroom: 8'7 x 7'7 (2.62m x 2.31m)

Lounge: 18'10 x 12'2 (5.74m x 3.71m)

Kitchen/Diner: 22'2 x 10'1 (6.76m x 3.08m)

Conservatory: 20'1 x 7'4 (6.13m x 2.24m)

Utility Room

OUTSIDE

Garage: 23'8 x 11'9 (7.22m x 3.58m)

Large Rear Garden

Off Road Parking



Main features

- A detached bungalow positioned on a sizeable plot offering a large rear garden
- Garage and ample off road parking
- Situated close to Harrow Lodge Park, local amenities and transport links

Nearest Schools

Primary Schools: St Mary's Catholic Primary 0.2 miles, Wykeham Primary 0.3 miles, Hylands Primary 0.6 miles. Secondary Schools: Hornchurch High School 0.7 miles, Raphael Independent School 0.7 miles, The Frances Bardsley School for Girls 1.2 miles

Transport Information

Train Stations: Romford 1.5 miles, Emerson Park 1.6 miles, Gidea Park 2.0 miles. Underground Hornchurch 1.8 miles, Upminster Bridge 1.8 miles, Elm Park 1.9 miles

Address

Vicarage Road, Hornchurch, Essex, RM12

Directions

For directions to this property please contact us.



Call Hornchurch Branch 01708 437777 ■ douglasallen.co.uk



- A private rental licensing scheme applies to some properties in this area, please contact us before proceeding
- Appliances & services are untested, dimensions are approximate and floor plans are not to scale

- Legal advice should be taken to verify fixtures/fittings, planning, alterations and/or lease details
- Through a Homewise Home For Life Plan people aged 60+ can secure this property for up to 59% less, by purchasing a Lifetime Lease.

EPC RATING	CURRENT:	POTENTIAL:
	D(66)	B(36)

51915892/20240531/DT/JC