

Awaiting
photo

**Modern
Auction**

£650,000

Freehold

4x  2x  2x 

Woodfield Way,
Hornchurch, Essex,
RM12

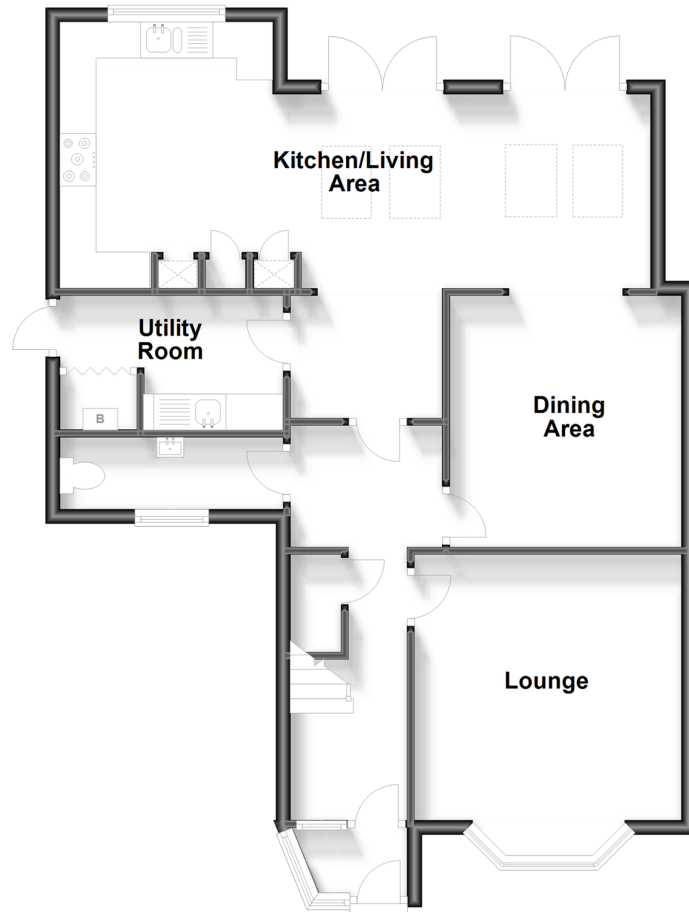


**DOUGLAS
ALLEN**

Helping you move forwards

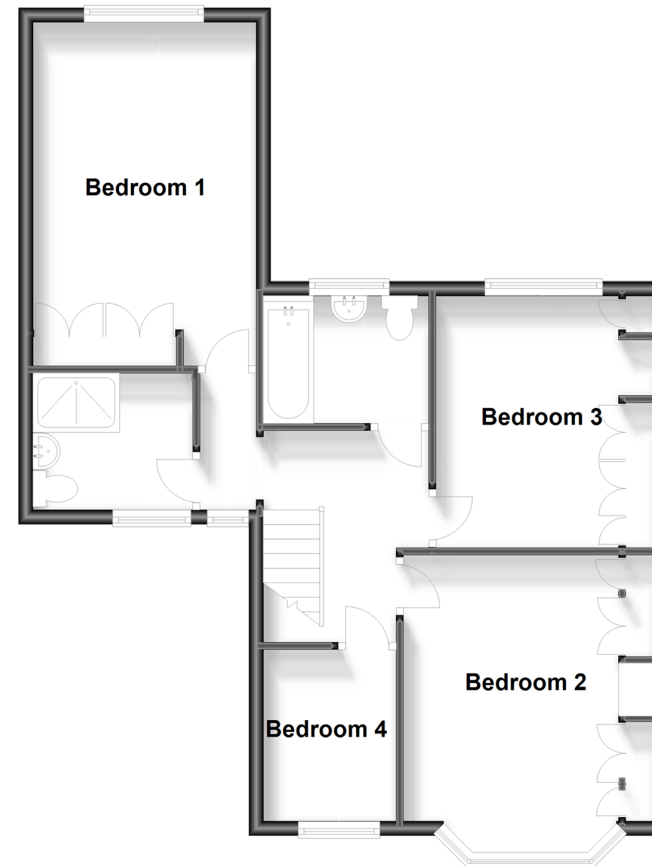
Ground Floor

Approx. 75.0 sq. metres (806.8 sq. feet)



First Floor

Approx. 60.9 sq. metres (655.9 sq. feet)



Accommodation

GROUND FLOOR

Porch

Hallway

Lounge: 13'6 x 12'4 (4.12m x 3.76m)

Dining area: 11'7 x 10'5 (3.53m x 3.18m)

Inner hallway: 6'11 x 6'5 (2.11m x 1.96m)

Cloakroom

Kitchen/living area: 12'1 x 9'8 (3.69m x 2.95m) plus 17'4 x 8'10 (5.29m x 2.69m)

Utility room: 9'7 x 6'0 (2.92m x 1.83m)

FIRST FLOOR

Landing

Bedroom 1: 14'0 x 11'5 (4.27m x 3.48m)

Bedroom 2: 15'7 x 9'9 (4.75m x 2.97m)

Bedroom 3: 11'6 x 9'8 (3.51m x 2.95m)

Bedroom 4: 7'9 x 6'0 (2.36m x 1.83m)

Shower room: 7'6 x 5'10 (2.29m x 1.78m)

Bathroom: 6'8 x 6'6 (2.03m x 1.98m)

OUTSIDE

Front garden

Off road parking

Large rear garden



Main features

- Extended to side and rear, four bedroom end of terrace house
- Exceptionally large rear garden with potential STPP
- Ground floor cloakroom & utility room
- Less than a mile to Hornchurch Train Station



Nearest Schools

Primary Schools: Langtons Junior School 0.2 miles, Towers Junior School 0.5 miles, Suttons Primary 0.7 miles
Secondary Schools: Abbs Cross Academy 0.7 miles, The Sanders Draper School 0.8 miles, Hornchurch High School 0.8 miles

Transport Information

Train Stations: Hornchurch 0.4 miles, Emerson Park 0.6 miles, Upminster Bridge 0.7 miles, Elm Park 1.1 miles, Upminster 1.3 miles, Gidea Park 1.4 miles

Address

Woodfield Way, Hornchurch, Essex, RM12

Directions

For directions to this property please contact us.





Auctioneer's Comments

This property is for sale by Modern Method of Auction allowing the buyer and seller to complete within a 56 Day Reservation Period. Interested parties' personal data will be shared with the Auctioneer (iamsold Ltd).

If considering financing your purchase with a mortgage we recommend that you inspect and consider the property carefully with your lender before bidding. A Buyer Information Pack is provided, which you must view before bidding. The buyer is responsible for the Pack fee. For the most recent information on the Buyer Information Pack please contact the iamsold team. The cost of this pack is £349

The buyer signs a Reservation Agreement and makes payment of a Non-Refundable Reservation Fee of 4.2% of the purchase price inc VAT, subject to a minimum of £6,600 inc. VAT. This Fee is paid to reserve the property to the buyer during the Reservation Period and is paid in addition to the purchase price. The Fee is considered within calculations for stamp duty.

Buyers will be required to go through an identification verification process with iamsold and provide proof of how the purchase would be funded.

The Buyer Information Pack is a collection of documents in relation to the property. The documents may not tell you everything you need to know about the property, so you are required to complete your own due diligence before bidding. A sample copy of the Reservation Agreement and terms and conditions are also contained within this pack.

The property is subject to an undisclosed Reserve Price with both the Reserve Price and Starting Bid being subject to change.

The seller can instruct iamsold to agree a sale without a bidding process taking place or prior to a closing date. No further bids can be accepted after a buyer has paid a Reservation Fee.

Services may be recommended by the Agent/Auctioneer in which they will receive payment from the service provider if the service is taken. Payment varies but will be no more than £960 inc. VAT. These services are optional

Referral Arrangements

Douglas Allen and Auctioneer may recommend the services of third parties to you. Whilst these services are recommended as it is believed they will be of benefit; you are under no obligation to use any of these services and you should always consider your options before services are accepted.

Where services are accepted the Auctioneer or Douglas Allen may receive payment for the recommendation and you will be informed of any referral arrangement and payment prior to any services being taken by you.

TO VIEW OR MAKE A BID – Contact *Douglas Allen*
Or visit: <https://douglasallen.iamsold.co.uk>