



**Guide Price**  
**£525,000**

**Leasehold**

2x  2x  1x 

**St. John's Lodge, St.  
John's Road, Loughton,  
Essex, IG10**

**OVER 60?**

Secure this property  
for up to **59% less!**

 **DOUGLAS  
ALLEN**  
Helping you move forwards





## Main features

- **First floor flat close to Loughton High Road**
- **Within walking distance of the station**
- **Allocated parking space**
- **Over 990 year lease**
- **Good sized balcony and communal garden**

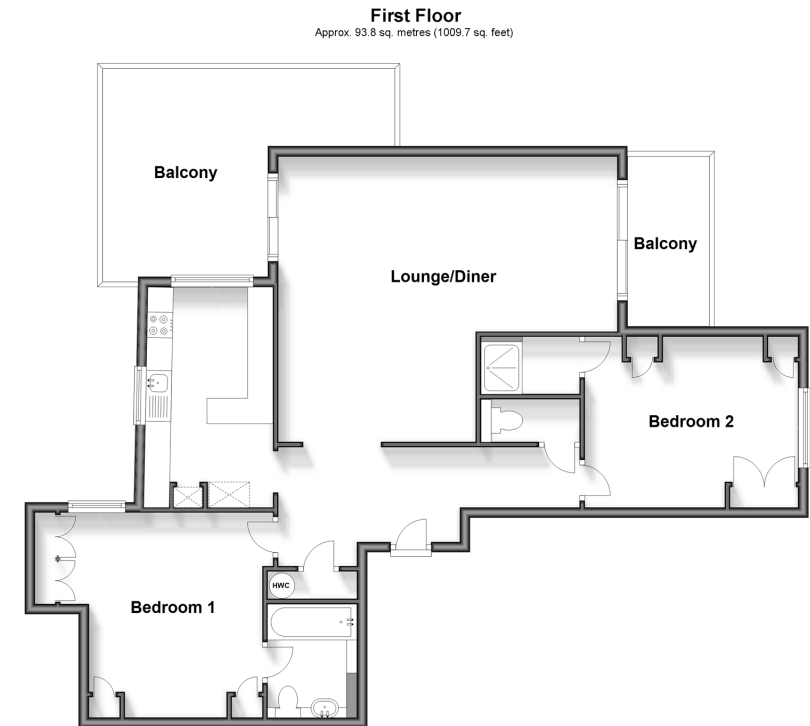
## Accommodation

### FIRST FLOOR

Entrance Hall  
 Lounge/Diner : 21'8 x 18'4 (6.61m x 5.59m)  
 Balcony 1  
 Balcony 2  
 Kitchen : 14'3 x 8'3 (4.35m x 2.52m)  
 Bedroom 1 : 12'8 up to fitted wardrobes x 12'6 (3.86m x 3.81m)  
 En-Suite Bathroom  
 Bedroom 2 : 13'7 x 11'6 (4.14m x 3.51m)  
 En-Suite Shower Room  
 Separate Toilet

### OUTSIDE

Communal Garden  
 Two Allocated Parking Spaces



**Call Epping - 01992 560600 ■ [douglasallen.co.uk](http://douglasallen.co.uk)**

- If buying to let, the energy rating will need to be improved to at least 'E' rating before you can let the property
- Appliances & services are untested, dimensions are approximate and floor plans are not to scale

- Legal advice should be taken to verify fixtures/fittings, planning, alterations and/or lease details
- Through a Homewise Home For Life Plan people aged 60+ can secure this property for up to 59% less, by purchasing a Lifetime Lease.



51509127/20250226/AG/JP