



Price

£450,000

Share of
Freehold

2x  1x  1x 

Campions, Sheering
Road, Harlow, Essex,
CM17

OVER 60?

Secure this property
for up to **59% less!**

 **DOUGLAS
ALLEN**
Helping you move forwards



Main features

- Situated in an exclusive private development
- Two double bedrooms
- Short drive to Harlow Mill Station
- Extensive communal gardens
- Potential for a loft conversion, subject to planning permissions
- Being sold chain free

Accommodation

GROUND FLOOR

Entrance Hall: 17'8 (5.39m) x 10'3 (3.13m) narrowing to 8'5 (2.57m)

FIRST FLOOR

Landing

Lounge : 15'3 x 15'0 (4.65m x 4.58m)

Kitchen : 13'7 (4.14m) x 12'10 (3.91m) narrowing to 9'11 (3.02m)

Bedroom 1 : 15'3 x 12'4 (4.65m x 3.76m)

Bedroom 2: 14'4 x 9'1 (4.37m x 2.77m)

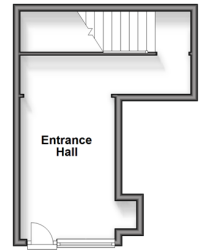
Bathroom

Separate Toilet

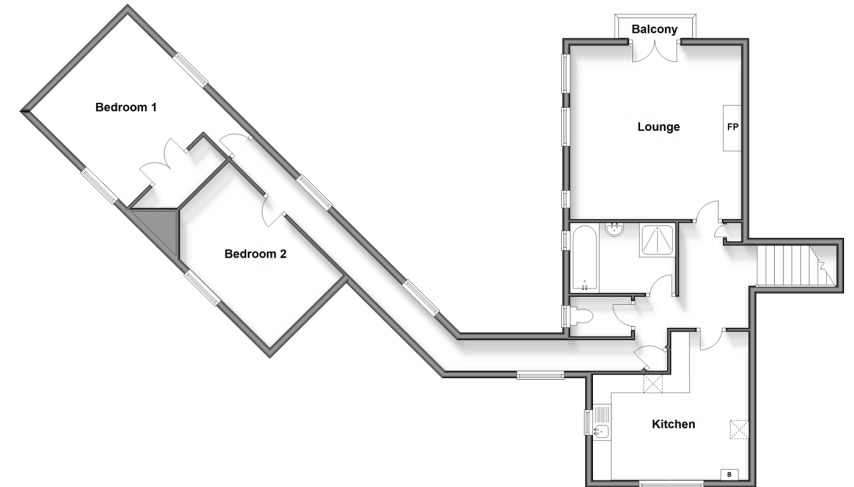
OUTSIDE

Communal Gardens

Ground Floor
Approx: 21.0 sq. metres (226.1 sq. feet)



First Floor
Approx: 97.6 sq. metres (1050.9 sq. feet)



Call Epping - 01992 560600 ■ douglasallen.co.uk

- A private rental licensing scheme applies to some properties in this area, please contact us before proceeding
- If buying to let, the energy rating will need to be improved to at least 'E' rating before you can let the property
- Legal advice should be taken to verify fixtures/fittings, planning, alterations and/or lease details
- Appliances & services are untested, dimensions are approximate and floor plans are not to scale
- Through a Homewise Home For Life Plan people aged 60+ can secure this property for up to 59% less, by purchasing a Lifetime Lease.



51509076/20240827/AA/LL