



Price
£460,000

Freehold

3x  1x  1x 

**Shooters Drive, Nazeing,
Essex, EN9**

OVER 60?

Secure this property
for up to **59% less!**

 **DOUGLAS
ALLEN**
Helping you move forwards



Main features

- Beautifully presented detached house built in 2014
- Spacious kitchen/diner with direct access into the garden
- Under floor heating on the ground floor
- Good size accommodation throughout
- Excellent decorative order

Accommodation

GROUND FLOOR

Entrance Hall

Lounge: 12'11 x 11'6 (3.94m x 3.51m)

Kitchen/Dining Room: 22'10 x 9'11 (6.96m x 3.02m)

Cloakroom

FIRST FLOOR

Landing

Bedroom 1: 12'11 x 11'6 (3.94m x 3.51m)

Bedroom 2: 11'11 x 8'11 (3.63m x 2.72m)

Bedroom 3: 9'5 x 6'2 (2.87m x 1.88m)

Family Bathroom

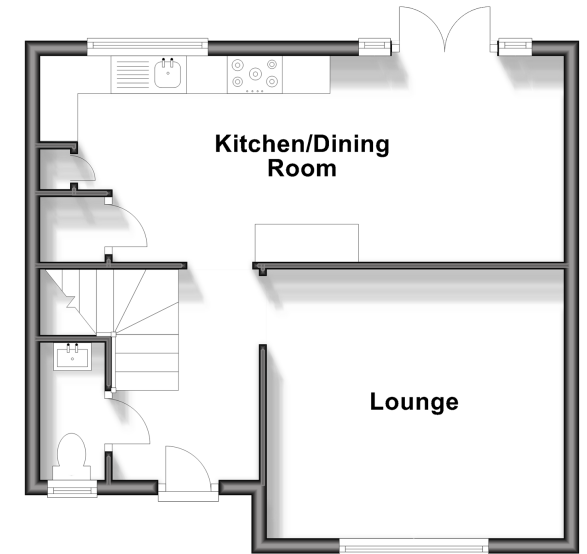
OUTSIDE

Rear Garden

Off Road Parking

Ground Floor

Approx. 42.0 sq. metres (452.5 sq. feet)



First Floor

Approx. 42.0 sq. metres (452.5 sq. feet)



Call Epping - 01992 560600 ■ douglasallen.co.uk

- A private rental licensing scheme applies to some properties in this area, please contact us before proceeding
- Legal advice should be taken to verify fixtures/fittings, planning, alterations and/or lease details
- Appliances & services are untested, dimensions are approximate and floor plans are not to scale
- Through a Homewise Home For Life Plan people aged 60+ can secure this property for up to 59% less, by purchasing a Lifetime Lease.



51509012/20240504/KA/IW