



Price

£650,000

Freehold

3x  1x  1x 

Green Glade, Theydon
Bois, Epping, Essex,
CM16

OVER 60?

Secure this property
for up to **59% less!**

 **DOUGLAS
ALLEN**
Helping you move forwards



Main features

- Semi-detached house
- Well proportioned family home
- Potential to extend (subject to planning permission)
- Larger than average rear garden
- Popular location being a stones' throw from the village green
- Walking distance to the shops and Central Line station

Accommodation

GROUND FLOOR

Entrance Hall

Lounge: 17'5 x 12'6 (5.31m x 3.81m)

Kitchen/Diner: 16'8 x 13'4 (5.08m x 4.07m)

FIRST FLOOR

Landing

Bedroom 1: 12'4 x 10'6 (3.76m x 3.20m)

Bedroom 2: 10'10 x 10'6 (3.30m x 3.20m)

Bedroom 3: 10'3 x 6'0 (3.13m x 1.83m)

Family Bathroom

Separate Toilet

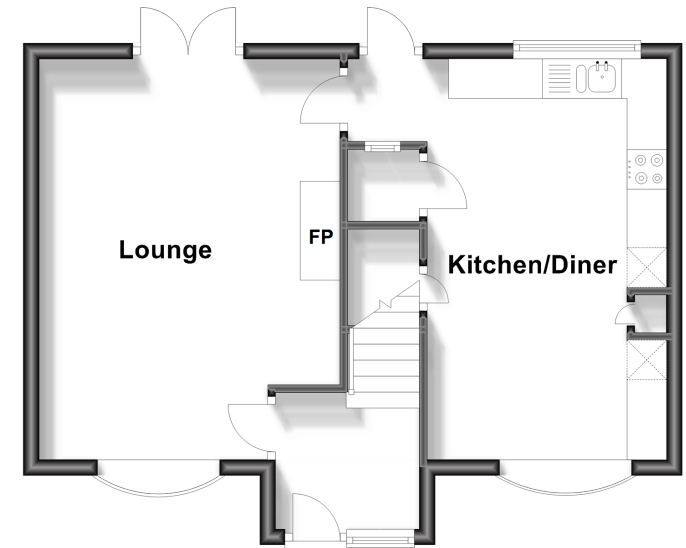
OUTSIDE

Rear Garden

Front Garden

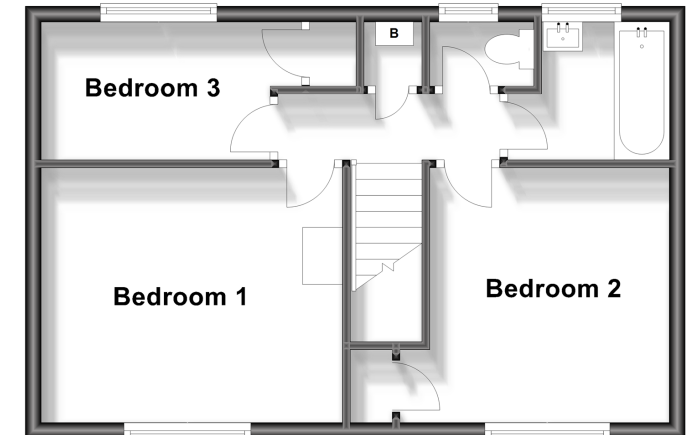
Ground Floor

Approx. 42.3 sq. metres (454.9 sq. feet)



First Floor

Approx. 40.3 sq. metres (433.3 sq. feet)



Call Epping - 01992 560600 ■ douglasallen.co.uk

- A private rental licensing scheme applies to some properties in this area, please contact us before proceeding
- Legal advice should be taken to verify fixtures/fittings, planning, alterations and/or lease details
- Appliances & services are untested, dimensions are approximate and floor plans are not to scale
- Through a Homewise Home For Life Plan people aged 60+ can secure this property for up to 59% less, by purchasing a Lifetime Lease.



51508926/20231118/KA/IW