



Price
£420,000

Freehold

3x  1x  1x 

Peverel, London, E6

OVER 60?

Secure this property
for up to **59% less!**

 **DOUGLAS
ALLEN**
Helping you move forwards



Main features

- Terraced house situated in a quiet residential cul-de-sac location
- Downstairs cloakroom
- Off street parking
- Bus & road links to the City & Central London
- Close to New Beckton Park & local schools

Accommodation

GROUND FLOOR

Entrance Hall

Lounge/Diner: 14'9 x 14'4 (4.50m x 4.37m)

Kitchen/Breakfast Room: 18'1 x 8'2 (5.52m x 2.49m)

Cloakroom

FIRST FLOOR

Landing

Bedroom 1: 11'9 x 6'4 (3.58m x 1.93m)

Bedroom 2: 14'5 x 7'8 (4.40m x 2.34m)

Bedroom 3: 16'6 x 8'0 (5.03m x 2.44m)

Bathroom

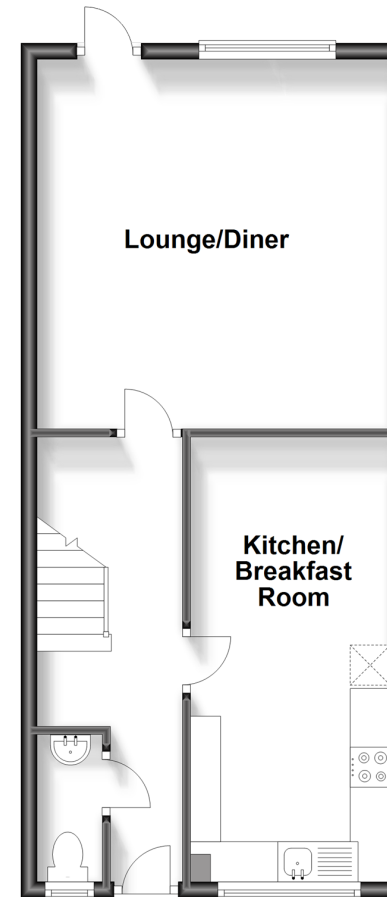
OUTSIDE

Rear Garden

Off Street Parking

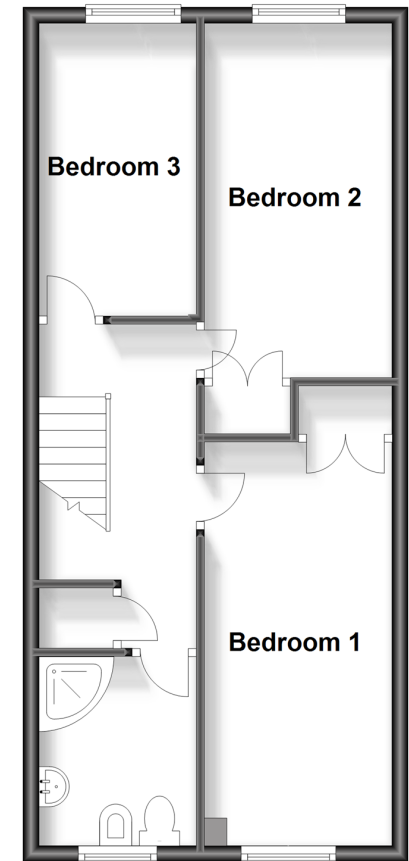
Ground Floor

Approx. 45.1 sq. metres (485.1 sq. feet)



First Floor

Approx. 45.1 sq. metres (485.1 sq. feet)



Call East Ham - 020 8472 8140 ■ douglasallen.co.uk

- A private rental licensing scheme applies to some properties in this area, please contact us before proceeding
- Legal advice should be taken to verify fixtures/fittings, planning, alterations and/or lease details
- Appliances & services are untested, dimensions are approximate and floor plans are not to scale
- Through a Homewise Home For Life Plan people aged 60+ can secure this property for up to 59% less, by purchasing a Lifetime Lease.



51315247/20240210/CN/NK