



Price
£500,000

Freehold

3x  1x  2x 

**Frinton Road, London,
E6**

OVER 60?

Secure this property
for up to **59% less!**

 **DOUGLAS
ALLEN**
Helping you move forwards



Main features

- End of terrace house situated close to East Ham High Road
- Ideal family home
- Low maintenance rear garden
- Close to good Primary & Secondary schools
- Bus & road links to Stratford & Iford Town Centres

Accommodation

GROUND FLOOR

Entrance Hall

Lounge: 13'0 x 11'7 (3.97m x 3.53m)

Dining Room: 11'3 x 9'4 (3.43m x 2.85m)

Kitchen/Breakfast Room: 12'6 x 11'6 (3.81m x 3.51m)

Utility Room: 13'5 x 4'8 (4.09m x 1.42m)

Bathroom

Separate Toilet

FIRST FLOOR

Landing

Bedroom 1: 15'5 x 13'7 (4.70m x 4.14m)

Bedroom 2: 12'5 x 9'7 (3.79m x 2.92m)

Bedroom 3: 10'9 x 8'8 (3.28m x 2.64m)

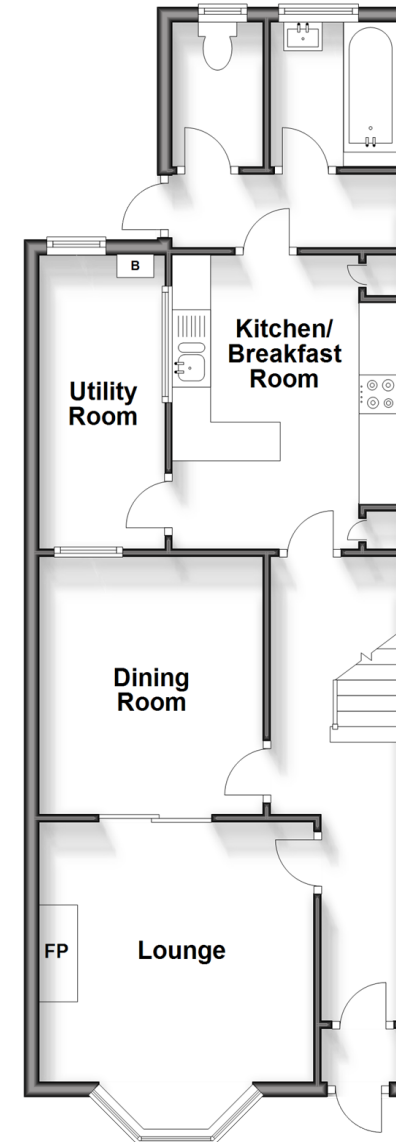
OUTSIDE

Front and Rear Garden

Garage

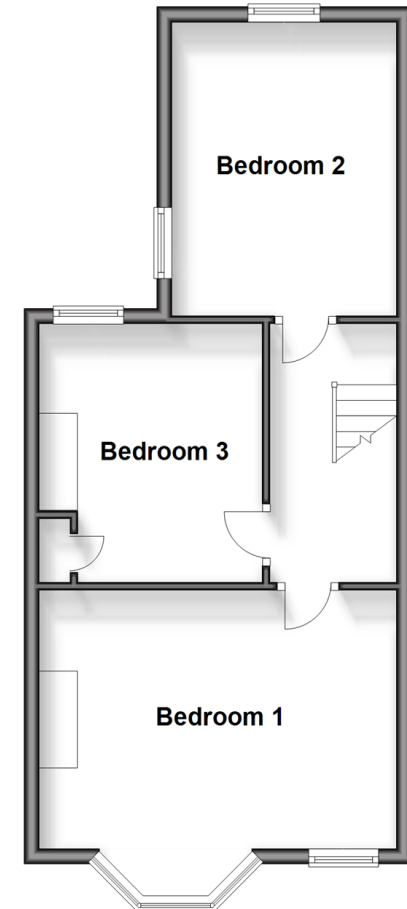
Ground Floor

Approx. 58.9 sq. metres (634.0 sq. feet)



First Floor

Approx. 43.3 sq. metres (466.3 sq. feet)



Call East Ham - 020 8472 8140 ■ douglasallen.co.uk

- A private rental licensing scheme applies to some properties in this area, please contact us before proceeding
- Legal advice should be taken to verify fixtures/fittings, planning, alterations and/or lease details
- Appliances & services are untested, dimensions are approximate and floor plans are not to scale
- Through a Homewise Home For Life Plan people aged 60+ can secure this property for up to 59% less, by purchasing a Lifetime Lease.



51315366/20240701/AV/AV