



OVER 60?

Secure this property
for up to **59% less!**

Price

£270,000

Leasehold

1x  1x  1x 

**Romford Road, London,
E7**



**DOUGLAS
ALLEN**

Helping you move forwards



Main features

- Ground floor converted flat with its own rear garden.
- Spacious open plan kitchen with lots of cupboard space
- Close to Forest Gate Station
- Places of worship nearby
- Bus links to Westfield Stratford

Accommodation

GROUND FLOOR

Entrance Hall

Living Room: 14'8 x 12'0 (4.47m x 3.66m)

Kitchen/Dining Room: 15'4 x 11'7 (4.68m x 3.53m)

Bedroom : 11'8 x 9'9 (3.56m x 2.97m)

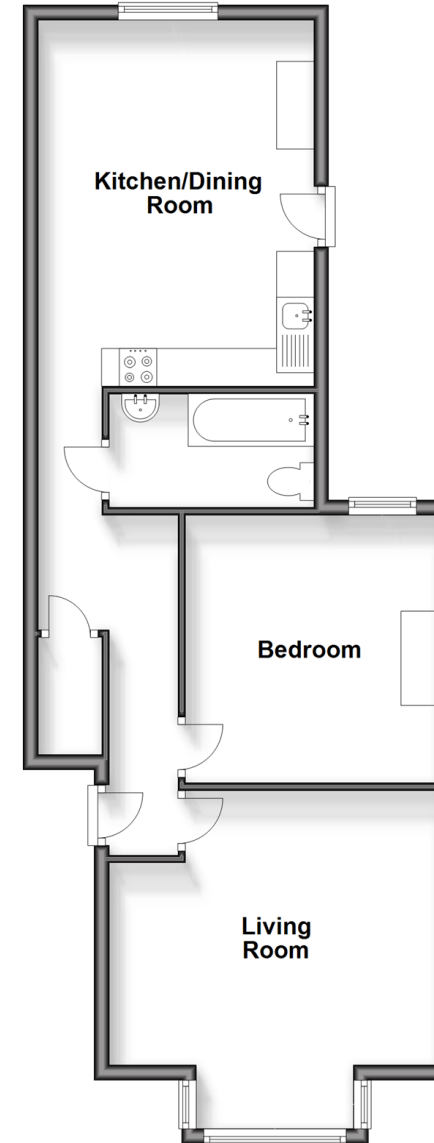
Bathroom

OUTSIDE

Garden

Ground Floor

Approx. 61.1 sq. metres (657.5 sq. feet)



Call East Ham - 020 8472 8140 ■ douglasallen.co.uk

- A private rental licensing scheme applies to some properties in this area, please contact us before proceeding
- Legal advice should be taken to verify fixtures/fittings, planning, alterations and/or lease details
- Appliances & services are untested, dimensions are approximate and floor plans are not to scale
- Through a Homewise Home For Life Plan people aged 60+ can secure this property for up to 59% less, by purchasing a Lifetime Lease.



51315314/20240406/CN/NK