



Price
£325,000

Leasehold

1x  1x  1x 

Maud Road, London, E13

OVER 60?

Secure this property
for up to **59% less!**

 **DOUGLAS
ALLEN**
Helping you move forwards



Main features

- Beautifully presented ground floor converted flat
- Neutral decor with period features throughout
- Sole use of large low maintenance rear garden & outbuilding
- Walking distance to Plaistow underground station

Accommodation

GROUND FLOOR

Entrance Hall

Lounge: 11'9 x 11'8 (3.58m x 3.56m)

Kitchen: 8'0 x 5'8 (2.44m x 1.73m)

Bedroom 1: 14'3 x 11'9 (4.35m x 3.58m)

Bathroom

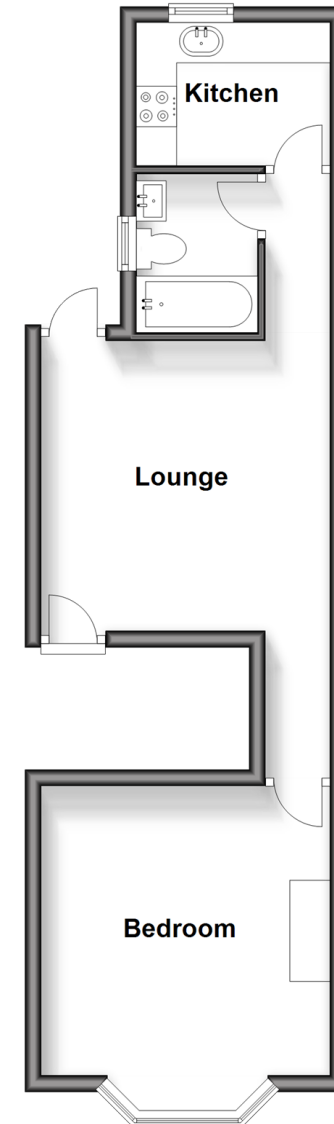
OUTSIDE

Front and Rear Garden

Outbuilding

Ground Floor

Approx. 36.9 sq. metres (397.3 sq. feet)



Call East Ham - 020 8472 8140 ■ douglasallen.co.uk

- A private rental licensing scheme applies to some properties in this area, please contact us before proceeding
- Legal advice should be taken to verify fixtures/fittings, planning, alterations and/or lease details
- Appliances & services are untested, dimensions are approximate and floor plans are not to scale
- Through a Homewise Home For Life Plan people aged 60+ can secure this property for up to 59% less, by purchasing a Lifetime Lease.



51315276/20240615/CN/LC