



Price

£450,000

Leasehold

2x  1x  1x 

**Electric House, Station
Road, Chingford, E4**



Main features

- Split level apartment
- Larger than average
- Very central location in the heart of Chingford
- Long lease
- All local amenities on your doorstep
- Must be seen!

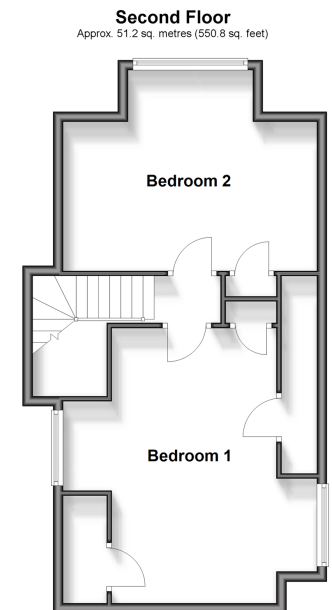
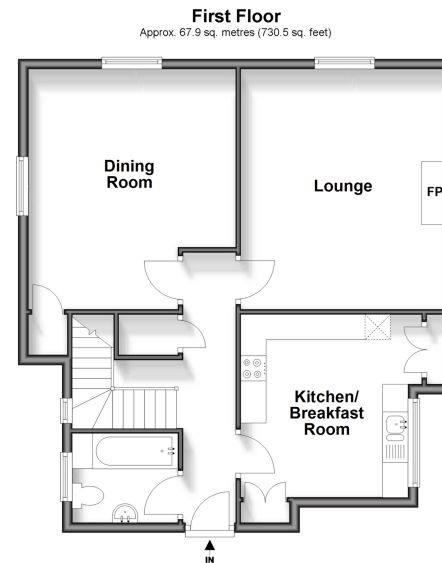
Accommodation

FIRST FLOOR

Lounge: 15'7 x 13'3 (4.75m x 4.04m)
 Dining Room: 15'8 x 13'4 (4.78m x 4.07m)
 Kitchen/Breakfast Room: 13'4 x 12'8 (4.07m x 3.86m)
 Bathroom

SECOND FLOOR

Bedroom 1: 17'10 x 14'1 (5.44m x 4.30m)
 Bedroom 2: 16'9 x 13'2 (5.11m x 4.02m)



Call Chingford - 020 8524 6331 ■ douglasallen.co.uk

- A private rental licensing scheme applies to some properties in this area, please contact us before proceeding
- If buying to let, the energy rating will need to be improved to at least 'E' rating before you can let the property
- Legal advice should be taken to verify fixtures/fittings, planning, alterations and/or lease details
- Appliances & services are untested, dimensions are approximate and floor plans are not to scale



51013427/20250405/KS/S