



Guide Price
£240,000

Leasehold

1x  1x  1x 

**Morley Court, Sinclair
Road, Chingford, E4**

OVER 60?

Secure this property
for up to **59% less!**

 **DOUGLAS
ALLEN**
Helping you move forwards



Main features

- First floor flat in good condition, ready to move into
- Large bedroom
- Communal gardens
- Close to local shops, bars & restaurants
- Chain-free
- Must be seen!

Accommodation

FIRST FLOOR

Entrance Hall

Lounge/Dining Room: 14'5 x 11'8
(4.40m x 3.56m)

Kitchen: 10'7 x 6'9 (3.23m x 2.06m)

Bedroom: 9'10 x 8'3 (3.00m x 2.52m)

Bathroom

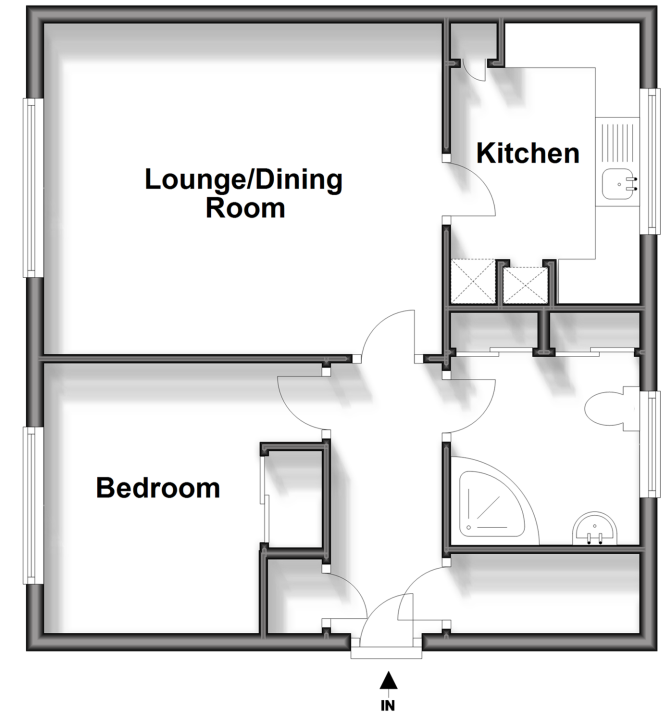
OUTSIDE

Garage

Communal Gardens

First Floor

Approx. 46.2 sq. metres (496.9 sq. feet)



Call Chingford - 020 8524 6331 ■ douglasallen.co.uk

- A private rental licensing scheme applies to some properties in this area, please contact us before proceeding
- Legal advice should be taken to verify fixtures/fittings, planning, alterations and/or lease details
- Appliances & services are untested, dimensions are approximate and floor plans are not to scale
- Through a Homewise Home For Life Plan people aged 60+ can secure this property for up to 59% less, by purchasing a Lifetime Lease.

