



Price
£550,000

Freehold

3x  1x  2x 

**Ainslie Wood Gardens,
Chingford, E4**

OVER 60?

Secure this property
for up to **59% less!**

 **DOUGLAS
ALLEN**
Helping you move forwards



Main features

- Large family home
- In need of modernisation
- Fantastic location
- Must be seen
- Chain free
- Close to transport links and Chingford Memorial Park

Accommodation

GROUND FLOOR

Lounge: 14'1 x 12'1 (4.30m x 3.69m)

Dining Room: 14'0 x 10'2 (4.27m x 3.10m)

Kitchen: 10'9 x 7'5 (3.28m x 2.26m)

FIRST FLOOR

Bedroom 1: 14'2 x 10'1 (4.32m x 3.08m)

Bedroom 2: 11'2 x 10'2 (3.41m x 3.10m)

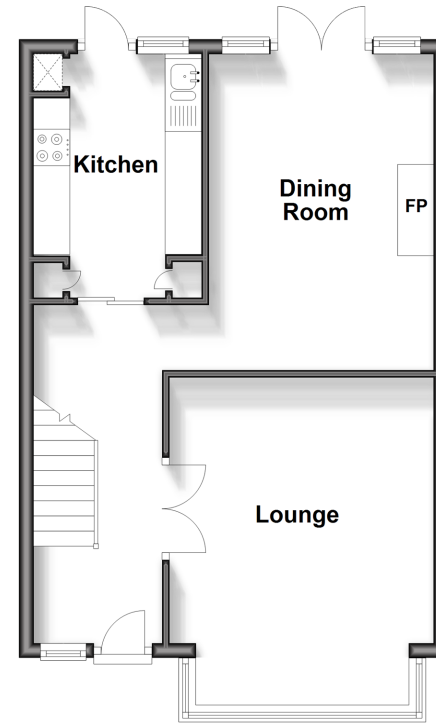
Bedroom 3: 6'8 x 6'3 (2.03m x 1.91m)

Bathroom

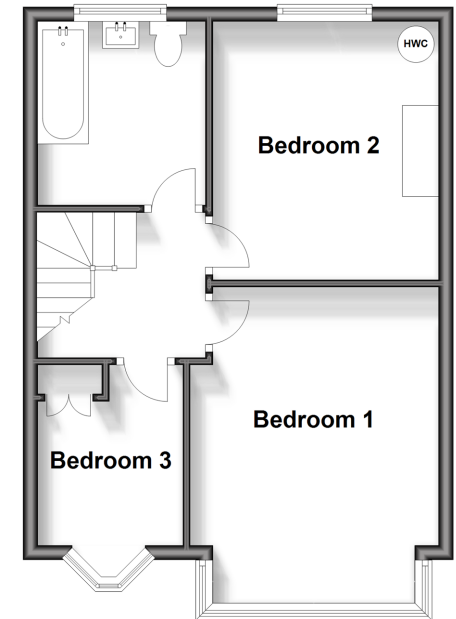
OUTSIDE

Garage
Rear Garden

Ground Floor
Approx. 45.7 sq. metres (491.8 sq. feet)



First Floor
Approx. 41.8 sq. metres (450.1 sq. feet)



Call Chingford - 020 8524 6331 ■ douglasallen.co.uk

- A private rental licensing scheme applies to some properties in this area, please contact us before proceeding
- Legal advice should be taken to verify fixtures/fittings, planning, alterations and/or lease details
- Appliances & services are untested, dimensions are approximate and floor plans are not to scale
- Through a Homewise Home For Life Plan people aged 60+ can secure this property for up to 59% less, by purchasing a Lifetime Lease.

EPC RATING	CURRENT:	POTENTIAL:



53117714/20241116/LA/S