



Price
£435,000

Freehold

2x  1x  1x 

**Powell Drive, Chingford,
E4**

OVER 60?

Secure this property
for up to **59% less!**

 **DOUGLAS
ALLEN**
Helping you move forwards



Main features

- Large bedrooms
- Split level
- Fantastic location close to Yardley Hill
- Must be seen!
- Driveway for two cars
- Good local schools nearby

Accommodation

GROUND FLOOR

Lounge/Diner: 13'9 x 13'7 (4.19m x 4.14m)

Kitchen: 13'0 x 6'7 (3.97m x 2.01m)

Toilet

FIRST FLOOR

Bedroom 1: 14'2 x 11'0 (4.32m x 3.36m)

Bedroom 2: 15'1 x 8'6 (4.60m x 2.59m)

Bathroom: 7'8 x 6'8 (2.34m x 2.03m)

OUTSIDE

Driveway

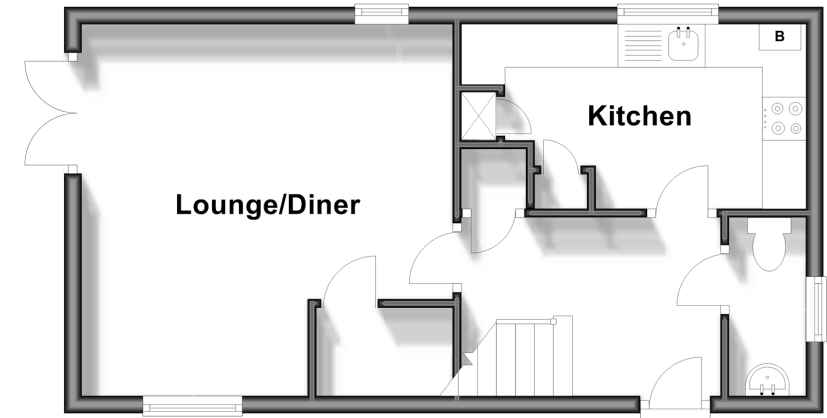
Rear Garden

Call Chingford - 020 8524 6331 ■ douglasallen.co.uk

- A private rental licensing scheme applies to some properties in this area, please contact us before proceeding
- Legal advice should be taken to verify fixtures/fittings, planning, alterations and/or lease details
- Appliances & services are untested, dimensions are approximate and floor plans are not to scale
- Through a Homewise Home For Life Plan people aged 60+ can secure this property for up to 59% less, by purchasing a Lifetime Lease.

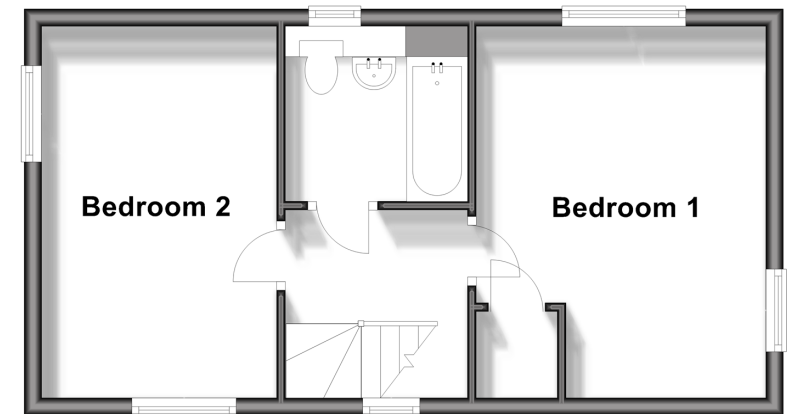
Ground Floor

Approx. 35.8 sq. metres (385.3 sq. feet)



First Floor

Approx. 35.8 sq. metres (385.3 sq. feet)



51013386/20241012/KS/DM