

Guide Price
£265,000

Leasehold

1x  1x  1x 

**Wyemead Crescent,
Chingford, E4**

OVER 60?

Secure this property
for up to **59% less!**

 **DOUGLAS
ALLEN**
Helping you move forwards



Main features

- Refurbished apartment
- Good sized reception room
- Large bedroom
- Fitted kitchen
- Off-street parking
- Residential location close to Chingford Station

Accommodation

FIRST FLOOR

Lounge/Dining Room: 14'8 x 10'6
(4.47m x 3.20m)

Kitchen: 9'8 x 8'6 (2.95m x 2.59m)

Bedroom: 12'0 x 10'8 (3.66m x 3.25m)

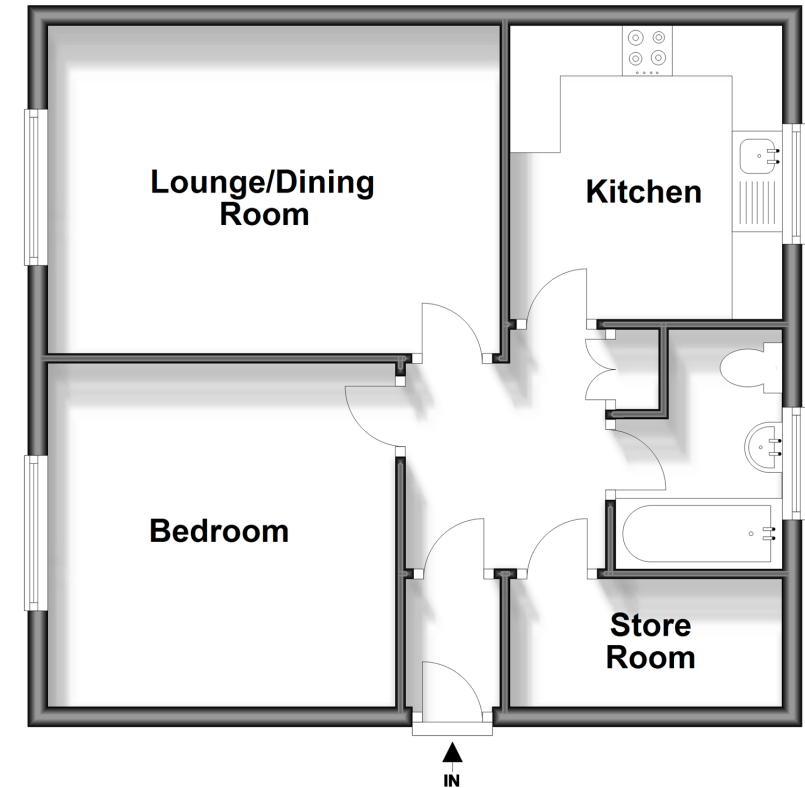
Bathroom: 7'5 x 5'2 (2.26m x 1.58m)

OUTSIDE

Communal Gardens
Car Park

First Floor

Approx. 49.6 sq. metres (533.5 sq. feet)



Call Chingford - 020 8524 6331 ■ douglasallen.co.uk

- A private rental licensing scheme applies to some properties in this area, please contact us before proceeding
- Legal advice should be taken to verify fixtures/fittings, planning, alterations and/or lease details
- Appliances & services are untested, dimensions are approximate and floor plans are not to scale
- Through a Homewise Home For Life Plan people aged 60+ can secure this property for up to 59% less, by purchasing a Lifetime Lease.



51013385/20241002/KS/DM