



Price
£515,000

Freehold

3x  1x  1x 

**Middleton Avenue,
Chingford, Chingford,
E4**

 **DOUGLAS
ALLEN**
Helping you move forwards



Main features

- End of terrace family home in good decorative order
- Hardstanding
- Great location in Chingford
- Can be extended subject to the usual permissions
- All local amenities close by

Accommodation

GROUND FLOOR

Hallway

Lounge: 12'7 x 11'3 (3.84m x 3.43m)

Kitchen/Diner: 17'1 x 11'6 (5.21m x 3.51m)

FIRST FLOOR

Landing

Bedroom 1: 13'2 x 11'8 (4.02m x 3.56m)

Bedroom 2: 11'8 x 11'7 (3.56m x 3.53m)

Bedroom 3: 7'6 x 6'2 (2.29m x 1.88m)

Bathroom

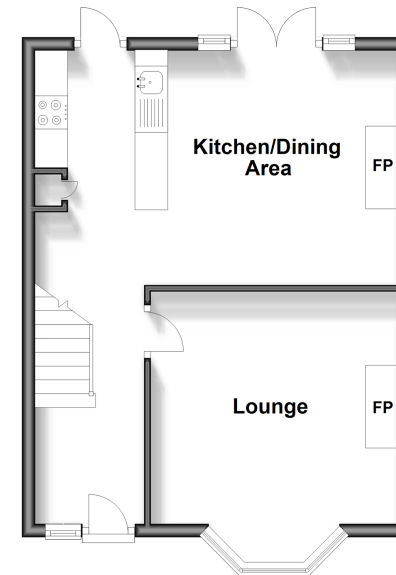
OUTSIDE

Hardstanding

Rear Garden

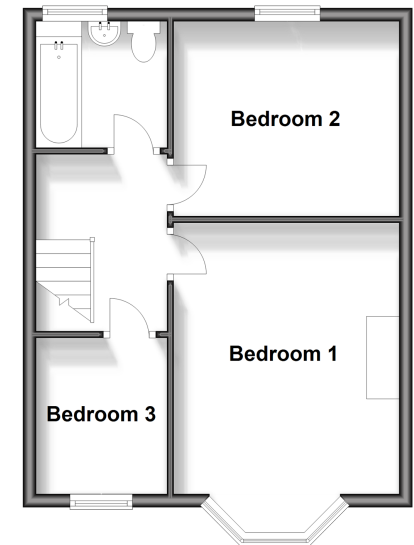
Ground Floor

Approx. 40.0 sq. metres (430.6 sq. feet)



First Floor

Approx. 40.0 sq. metres (430.6 sq. feet)



Call Chingford - 020 8524 6331 ■ douglasallen.co.uk

- A private rental licensing scheme applies to some properties in this area, please contact us before proceeding
- Legal advice should be taken to verify fixtures/fittings, planning, alterations and/or lease details
- Appliances & services are untested, dimensions are approximate and floor plans are not to scale



51012851/20240821/KS/S