



Price
£365,000

Leasehold

3x  1x  1x 

Ground Floor Flat,
Chingford Avenue,
Chingford, E4

 **DOUGLAS
ALLEN**
Helping you move forwards



Main features

- Well maintained flat with long lease in sought-after location
- Open plan kitchen/lounge
- Good sized garden
- Sole use of garden
- Modern fitted bathroom
- Utility Room

Accommodation

GROUND FLOOR

Living Area: 18'0 x 15'4 (5.49m x 4.68m)

Bedroom 1: 15'6 x 11'10 (4.73m x 3.61m)

Bedroom 2: 12'6 x 9'10 (3.81m x 3.00m)

Bedroom 3: 9'1 x 7'1 (2.77m x 2.16m)

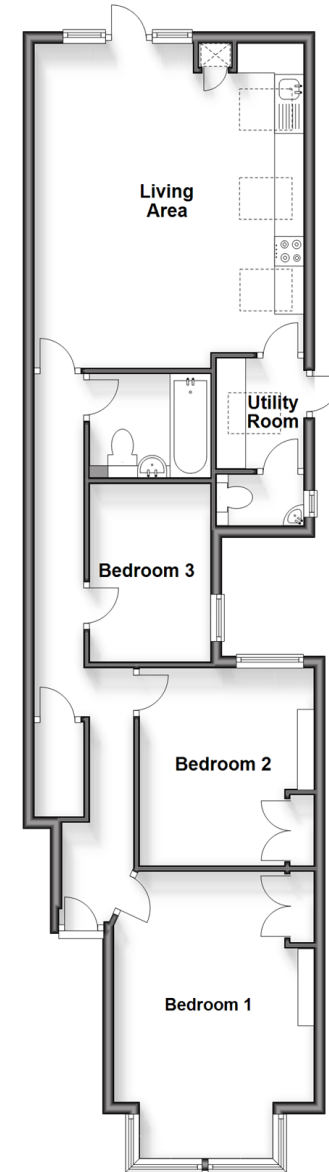
Bathroom

Utility Room

OUTSIDE

Rear Garden

Ground Floor
Approx. 77.8 sq. metres (837.0 sq. feet)



Call Chingford - 020 8524 6331 ■ douglasallen.co.uk

- A private rental licensing scheme applies to some properties in this area, please contact us before proceeding
- If buying to let, the energy rating will need to be improved to at least 'E' rating before you can let the property
- Legal advice should be taken to verify fixtures/fittings, planning, alterations and/or lease details
- Appliances & services are untested, dimensions are approximate and floor plans are not to scale



51013334/20240706/KS/S