

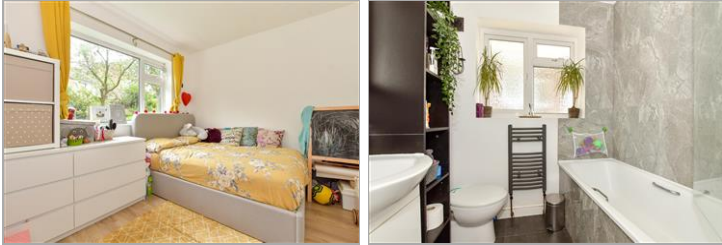


Guide Price
£350,000

Leasehold

2x  1x  1x 

**Top House Rise,
Chingford, E4**



Main features

- Ground floor maisonette
- Modern kitchen
- Two double bedrooms
- Large reception
- North Chingford location
- Short walk to Chingford Overground Station

Accommodation

GROUND FLOOR

Entrance Hall

Lounge/Diner: 15'9 x 10'6 (4.80m x 3.20m)

Kitchen : 9'3 x 7'5 (2.82m x 2.26m)

Bedroom 1 : 13'3 x 8'9 (4.04m x 2.67m)

Bedroom 2: 13'3 x 9'8 (4.04m x 2.95m)

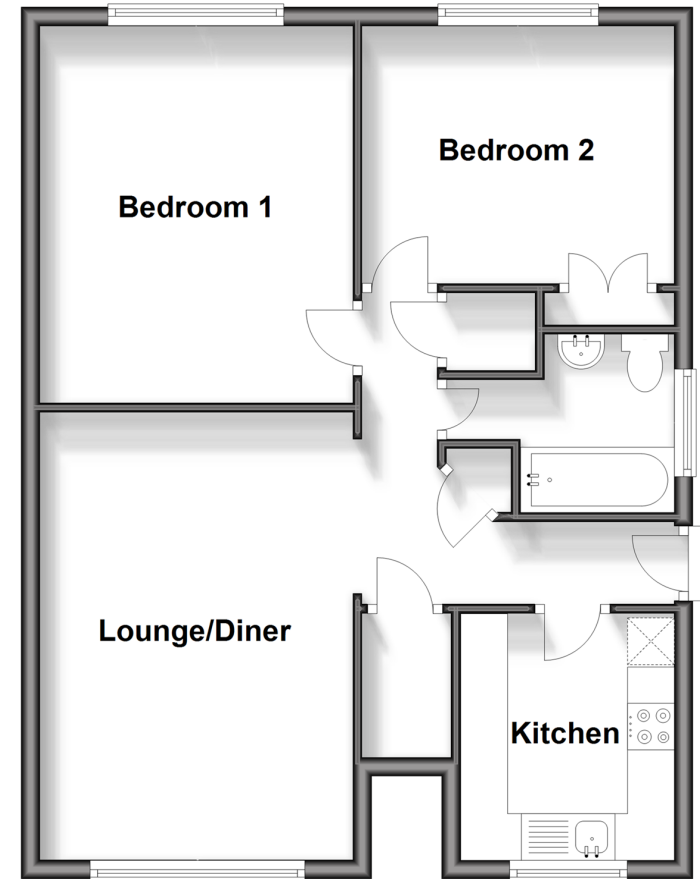
Bathroom

OUTSIDE

Communal Garden

Ground Floor

Approx. 59.3 sq. metres (638.8 sq. feet)



Call Chingford - 020 8524 6331 ■ douglasallen.co.uk

- A private rental licensing scheme applies to some properties in this area, please contact us before proceeding
- Legal advice should be taken to verify fixtures/fittings, planning, alterations and/or lease details
- Appliances & services are untested, dimensions are approximate and floor plans are not to scale



51013332/20250510/KS/DM