



**Price**  
**£400,000**

**Leasehold**

3x  1x  1x 

**Old Church Road,  
Chingford, London, E4**

**OVER 60?**

Secure this property  
for up to **59% less!**

 **DOUGLAS  
ALLEN**  
Helping you move forwards





## Main features

- Stunning maisonette in North Chingford location
- Lease over 160 years
- Private rear garden
- View of William Girling Reservoir and the River Lea
- Several 'good' schools close by

## Accommodation

### FIRST FLOOR

#### Hallway

Lounge: 13'11 x 11'4 (4.24m x 3.46m)

Kitchen: 8'2 x 8'1 (2.49m x 2.47m)

Bedroom 1: 12'4 x 9'11 (3.76m x 3.02m)

Bedroom 2: 11'11 x 8'0 (3.63m x 2.44m)

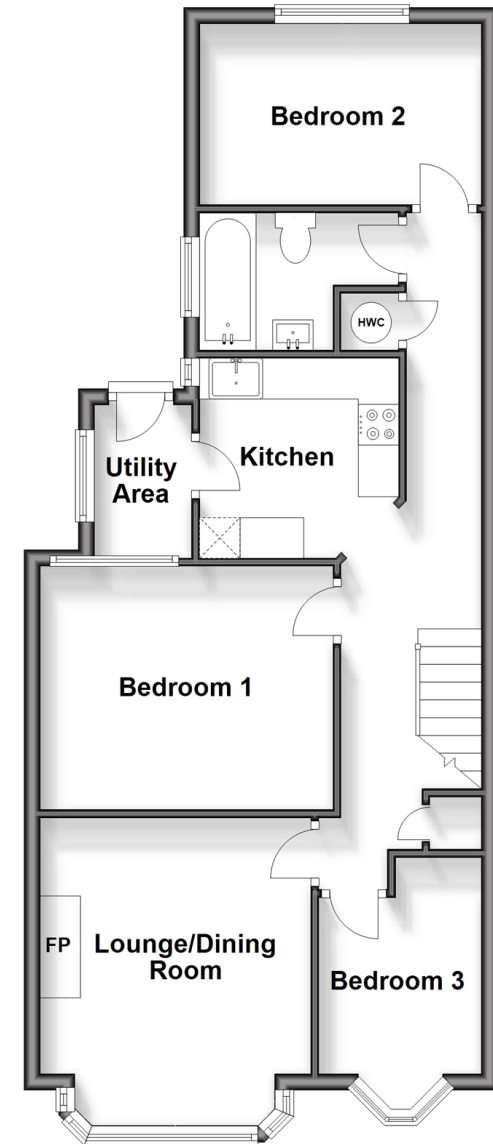
Bedroom 3: 8'0 x 7'0 (2.44m x 2.14m)

#### Bathroom

### OUTSIDE

#### Rear Garden

**First Floor**  
Approx. 60.7 sq. metres (653.4 sq. feet)



Call Chingford - 020 8524 6331 ■ [douglasallen.co.uk](http://douglasallen.co.uk)

- A private rental licensing scheme applies to some properties in this area, please contact us before proceeding
- Legal advice should be taken to verify fixtures/fittings, planning, alterations and/or lease details
- Appliances & services are untested, dimensions are approximate and floor plans are not to scale
- Through a Homewise Home For Life Plan people aged 60+ can secure this property for up to 59% less, by purchasing a Lifetime Lease.



51010036/20240608/KS/RW