



Price
£550,000

Freehold

3x  1x  1x 

**Cranston Gardens,
Chingford, E4**

OVER 60?

Secure this property
for up to **59% less!**

 **DOUGLAS
ALLEN**
Helping you move forwards



Main features

- End of terrace 1930's house
- Large rear garden
- Double garage with rear entrance
- Room to extend subject to the usual planning permissions
- Quiet residential street, easy access to Highams Park

Accommodation

GROUND FLOOR

Lounge: 25'5 x 12'0 (7.75m x 3.66m)

Kitchen: 15'3 x 6'0 (4.65m x 1.83m)

FIRST FLOOR

Bedroom 1: 13'6 x 9'0 (4.12m x 2.75m)

Bedroom 2: 11'2 x 8'5 (3.41m x 2.57m)

Bedroom 3: 10'1 x 7'0 (3.08m x 2.14m)

Bathroom: 7'6 x 7'2 (2.29m x 2.19m)

OUTSIDE

Shared driveway

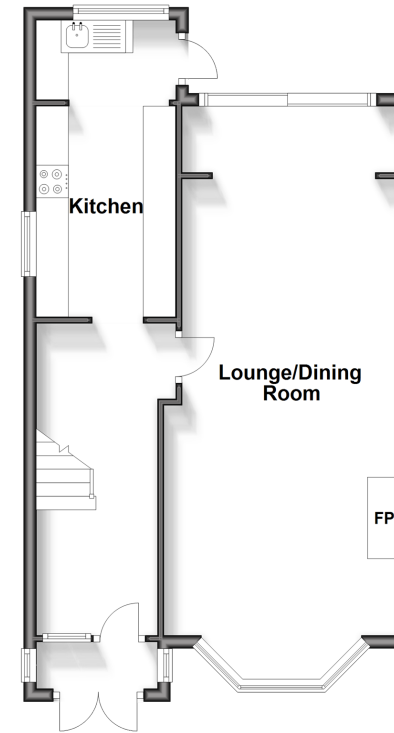
Rear Garden

Double Garage

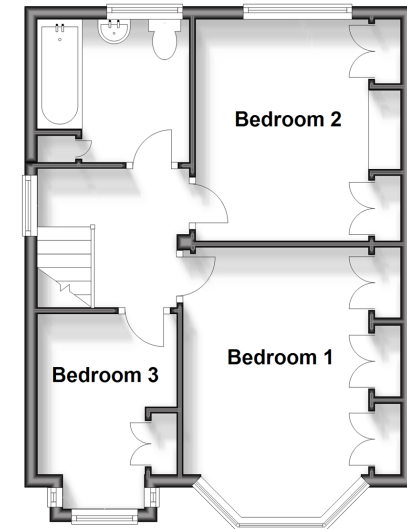
Call Chingford - 020 8524 6331 ■ douglasallen.co.uk

- A private rental licensing scheme applies to some properties in this area, please contact us before proceeding
- Legal advice should be taken to verify fixtures/fittings, planning, alterations and/or lease details
- Appliances & services are untested, dimensions are approximate and floor plans are not to scale
- Through a Homewise Home For Life Plan people aged 60+ can secure this property for up to 59% less, by purchasing a Lifetime Lease.

Ground Floor
Approx. 50.6 sq. metres (544.7 sq. feet)



First Floor
Approx. 40.5 sq. metres (435.8 sq. feet)



51013275/20240320/KS/DM