



Guide Price
£275,000

Leasehold

2x  2x  1x 

**Lockwood Place,
Chingford, London, E4**

OVER 60?

Secure this property
for up to **59% less!**

 **DOUGLAS
ALLEN**
Helping you move forwards



Main features

- Long lease
- Lounge with extra high ceilings
- Modern top floor apartment
- Two double bedrooms, two bathrooms
- Open plan kitchen/diner
- Close to all local amenities & transport facilities

Accommodation

SECOND FLOOR

Hallway

Lounge: 14'4 x 12'4 (4.37m x 3.76m)

Kitchen: 10'8 x 6'4 (3.25m x 1.93m)

Bedroom 1: 12'4 x 8'8 (3.76m x 2.64m)

En Suite: 7'1 x 2'10 (2.16m x 0.86m)

Bedroom 2: 8'10 x 7'6 (2.69m x 2.29m)

Bathroom: 6'8 x 6'4 (2.03m x 1.93m)

Storage Cupboard

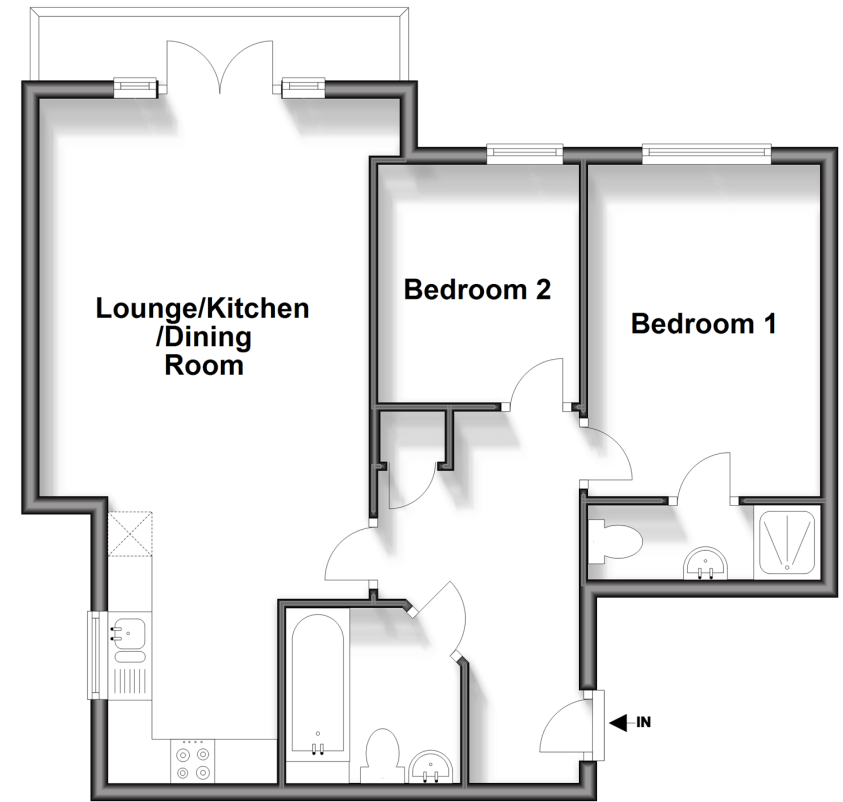
OUTSIDE

Balcony

Parking Space

Second Floor

Approx. 56.5 sq. metres (608.1 sq. feet)



Call Chingford - 020 8524 6331 ■ douglasallen.co.uk

- A private rental licensing scheme applies to some properties in this area, please contact us before proceeding
- Legal advice should be taken to verify fixtures/fittings, planning, alterations and/or lease details
- Appliances & services are untested, dimensions are approximate and floor plans are not to scale
- Through a Homewise Home For Life Plan people aged 60+ can secure this property for up to 59% less, by purchasing a Lifetime Lease.



51013193/20240727/KS/DM