



Price
£625,000

Freehold

3x  1x  1x 

**Silverthorn Gardens,
Chingford, E4**



**DOUGLAS
ALLEN**
Helping you move forwards



Main features

- Situated in a quiet no through road in North Chingford
- In need of modernisation
- Extended kitchen and dining area
- Within distance of Chingford Foundation and Parkside Primary Schools
- Close to Mansfield and Ridgeway Parks
- Being sold chain free

Accommodation

GROUND FLOOR

Entrance Hall
 Lounge : 31'0 x 12'0 (9.46m x 3.66m)
 Dining Area : 10'0 x 8'8 (3.05m x 2.64m)
 Kitchen: 11'2 x 10'0 (3.41m x 3.05m)
 Bedroom 3 : 9'6 x 7'5 (2.90m x 2.26m)
 Bathroom

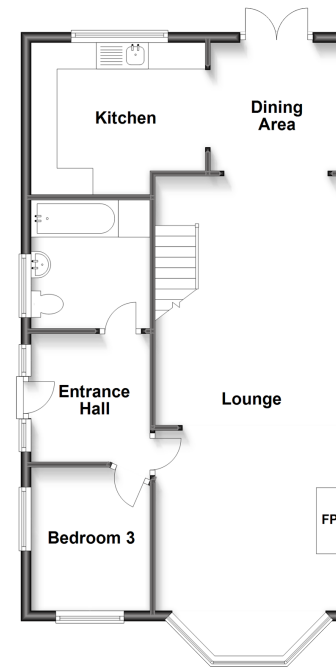
FIRST FLOOR

Landing
 Bedroom 1 : 15'7 x 15'4 (4.75m x 4.68m)
 Bedroom 2 : 15'6 x 8'8 (4.73m x 2.64m)

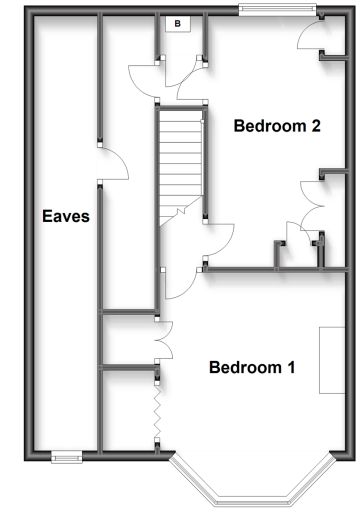
OUTSIDE

Garage
 Front Garden
 Rear Garden

Ground Floor
 Approx. 64.9 sq. metres (698.7 sq. feet)



First Floor
 Approx. 49.8 sq. metres (535.9 sq. feet)



Call Chingford - 020 8524 6331 ■ douglasallen.co.uk

- A private rental licensing scheme applies to some properties in this area, please contact us before proceeding
- Appliances & services are untested, dimensions are approximate and floor plans are not to scale

- Legal advice should be taken to verify fixtures/fittings, planning, alterations and/or lease details



51013089/20240330/KS/JC