



Price
£380,000

Freehold

2x  1x  1x 

**Hazelwood Park Close,
Chigwell, Essex IG7**



Main features

- Ideal for investment or first time buyers
- Chain free
- 2 Allocated parking spaces
- Fantastic location close to Hainault station and local shops
- Easy access to Hainault Forest Country Park

Accommodation

GROUND FLOOR

Porch

Lounge: 14'0 x 12'8 (4.27m x 3.86m)

Kitchen/Diner: 12'8 x 9'2 (3.86m x 2.80m)

Sun Room: 9'0 x 8'8 (2.75m x 2.64m)

FIRST FLOOR

Landing

Bedroom 1: 10'3 x 9'2 (3.13m x 2.80m)

Bedroom 2: 12'9 x 6'8 (3.89m x 2.03m)

Bathroom

OUTSIDE

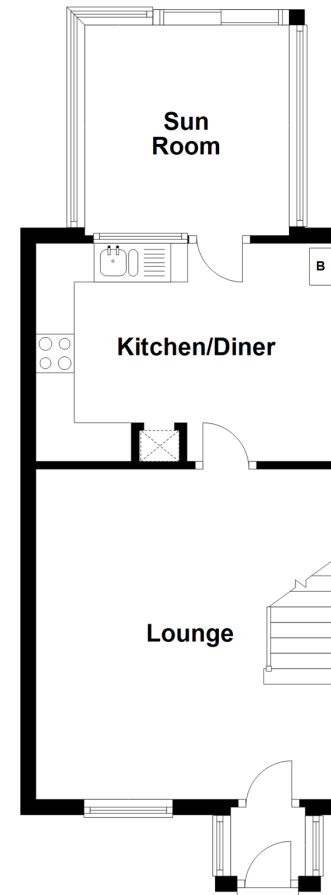
Rear Garden

Front Garden

2 Allocated Parking Spaces

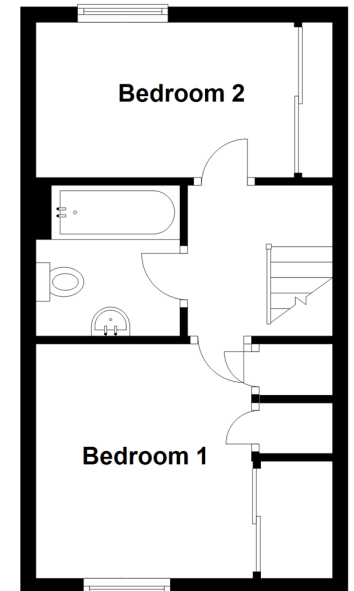
Ground Floor

Approx. 36.4 sq. metres (391.3 sq. feet)



First Floor

Approx. 27.9 sq. metres (299.8 sq. feet)



Call Chigwell - 020 8501 2131 ■ douglasallen.co.uk

- A private rental licensing scheme applies to some properties in this area, please contact us before proceeding
- Legal advice should be taken to verify fixtures/fittings, planning, alterations and/or lease details
- Appliances & services are untested, dimensions are approximate and floor plans are not to scale



50907071/20211111/FC/RB