



Price
£550,000

Freehold

4x  2x  2x 

**Crossbow Road,
Chigwell, Essex IG7**



Main features

- Double storey extension to the side
- Refurbished to a high standard
- En-suite to Bedroom 4
- Landscaped rear garden
- Downstairs cloakroom and utility room
- Easy access to Hainault Forest Country Park

Accommodation

GROUND FLOOR

Porch

Hallway

Family/Dining Area: 19'1 x 8'0 (5.82m x 2.44m)

Cloakroom/Utility Room

Kitchen/Breakfast Room: 13'8 x 9'11 (4.17m x 3.02m)

Lounge: 13'9 x 12'0 (4.19m x 3.66m)

FIRST FLOOR

Landing

Bedroom 1: 14'11 x 12'1 (4.55m x 3.69m)

Bedroom 2: 9'11 into fitted wardrobes x 8'7 (3.02m x 2.62m)

Bathroom

Bedroom 3: 10'8 x 7'11 (3.25m x 2.41m)

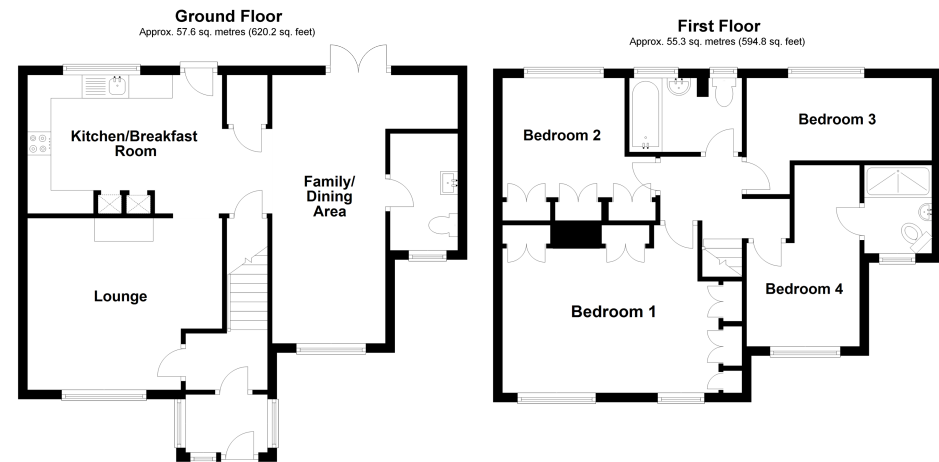
Bedroom 4: 13'0 x 8'2 (3.97m x 2.49m)

En-suite Shower Room

OUTSIDE

Rear Garden

Off Road Parking



Call Chigwell - 020 8501 2131 ■ douglasallen.co.uk

- This property is not standard construction which could affect mortgage lending, please contact us before proceeding
- Legal advice should be taken to verify fixtures/fittings, planning, alterations and/or lease details

- A private rental licensing scheme applies to some properties in this area, please contact us before proceeding
- Appliances & services are untested, dimensions are approximate and floor plans are not to scale