



OVER 60?

Secure this property
for up to **59% less!**

Price

£400,000

Freehold

3x  1x  1x 

**Bell Farm Avenue,
Dagenham, Essex, RM10**

 **DOUGLAS
ALLEN**
Helping you move forwards



Main features

- End of terrace house, perfect family home
- Ground floor cloakroom & first floor bathroom
- Spacious lounge/diner with patio doors to rear garden
- Large modern fitted kitchen with plenty of storage space
- Non-standard construction

Accommodation

GROUND FLOOR

Entrance Porch

Entrance Hall

Lounge: 17'2 x 12'4 (5.24m x 3.76m)

Kitchen/Dining Area: 13'2 x 9'1 (4.02m x 2.77m)

Cloakroom

FIRST FLOOR

Landing

Bedroom 1: 12'11 x 10'8 (3.94m x 3.25m)

Bedroom 2: 11'6 x 9'2 (3.51m x 2.80m)

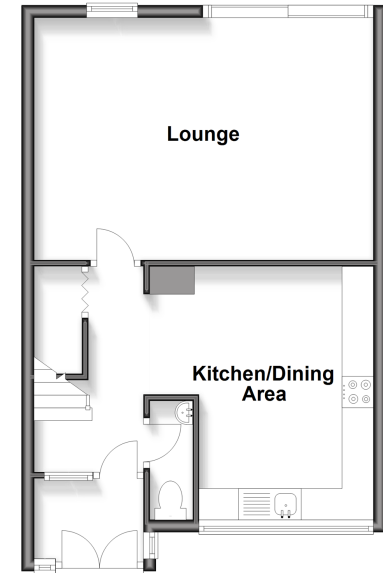
Bedroom 3: 10'0 x 7'4 (3.05m x 2.24m)

Bathroom

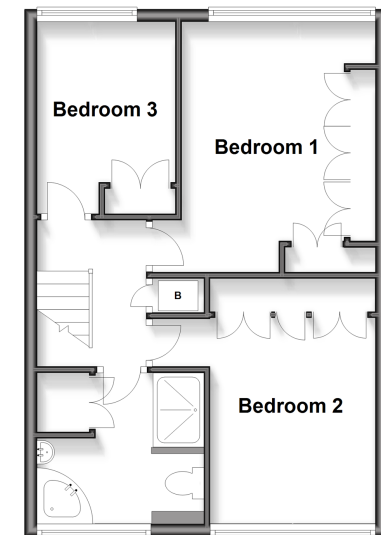
OUTSIDE

Front and Rear Garden

Ground Floor
Approx. 41.9 sq. metres (451.4 sq. feet)



First Floor
Approx. 43.3 sq. metres (465.7 sq. feet)



Call Chadwell Heath - 020 8597 0043 ■ douglasallen.co.uk

- A private rental licensing scheme applies to some properties in this area, please contact us before proceeding
- Legal advice should be taken to verify fixtures/fittings, planning, alterations and/or lease details
- Appliances & services are untested, dimensions are approximate and floor plans are not to scale
- Through a Homewise Home For Life Plan people aged 60+ can secure this property for up to 50% less, by purchasing a Lifetime Lease.



50713618/20251018/CN/MH