



Price
£525,000

Freehold

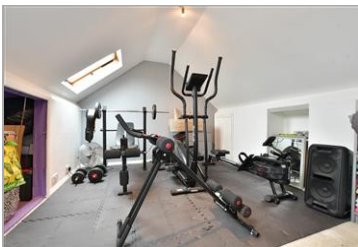
3x  1x  2x 

**Chadwell Heath Lane,
Romford, Essex, RM6**

OVER 60?

Secure this property
for up to **59% less!**

 **DOUGLAS
ALLEN**
Helping you move forwards



Main features

- Well presented terraced house with off street parking
- Spacious loft room
- Large kitchen/breakfast room with plenty of storage
- Close to Chadwell Heath station/Elizabeth Line
- Good Primary & Secondary schools nearby

Accommodation

GROUND FLOOR

Entrance Hall

Lounge: 13'2 x 11'2 (4.02m x 3.41m)

Dining Room: 11'5 x 7'7 (3.48m x 2.31m)

Kitchen/Breakfast Room: 16'7 (5.06m) x 11'4 (3.46m) narrowing to 8'3 at narrowest point (2.52m)

Cloakroom

FIRST FLOOR

Landing

Bedroom 1: 13'4 x 10'5 (4.07m x 3.18m)

Bedroom 2: 11'4 x 10'6 (3.46m x 3.20m)

Bedroom 3: 7'9 x 6'1 (2.36m x 1.86m)

Bathroom

SECOND FLOOR

Loft Room: 15'4 x 10'5 (4.68m x 3.18m)

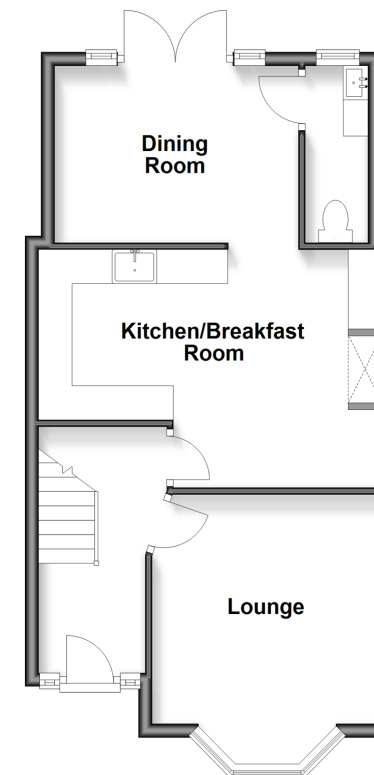
OUTSIDE

Rear Garden

Off Street Parking

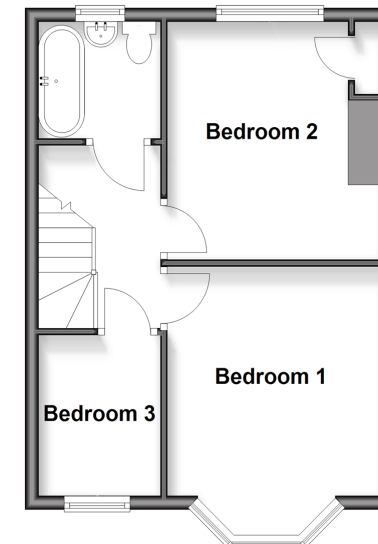
Ground Floor

Approx. 47.1 sq. metres (506.9 sq. feet)



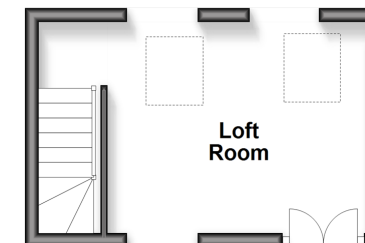
First Floor

Approx. 35.8 sq. metres (385.2 sq. feet)



Second Floor

Approx. 15.2 sq. metres (163.6 sq. feet)



Call Chadwell Heath - 020 8597 0043 ■ douglasallen.co.uk

- A private rental licensing scheme applies to some properties in this area, please contact us before proceeding
- Legal advice should be taken to verify fixtures/fittings, planning, alterations and/or lease details
- Appliances & services are untested, dimensions are approximate and floor plans are not to scale
- Through a Homewise Home For Life Plan people aged 60+ can secure this property for up to 50% less, by purchasing a Lifetime Lease.



50714285/20250816/CN/RW