



Price
£525,000

Freehold

3x  1x  1x 

**Grove Road, Chadwell
Heath, Essex, RM6**

OVER 60?

Secure this property
for up to **59% less!**

 **DOUGLAS
ALLEN**
Helping you move forwards



Main features

- Large semi-detached house with off street parking
- Spacious galley style kitchen/breakfast room
- Ground floor cloakroom
- Well maintained rear garden, ideal for outdoor entertaining
- Walking distance to local shops & places of worship

Accommodation

GROUND FLOOR

Entrance Hall

Lounge/Dining Area: 13'8 x 11'5 (4.17m x 3.48m) plus 9'1 x 11'5 (2.77m x 3.48m)

Kitchen/Breakfast Room: 18'2 x 9'8 (5.54m x 2.95m)

Cloakroom

FIRST FLOOR

Landing

Bedroom 1: 12'8 x 11'3 (3.86m x 3.43m)

Bedroom 2: 11'1 x 9'0 (3.38m x 2.75m)

Bedroom 3: 9'8 x 9'4 (2.95m x 2.85m)

Bathroom

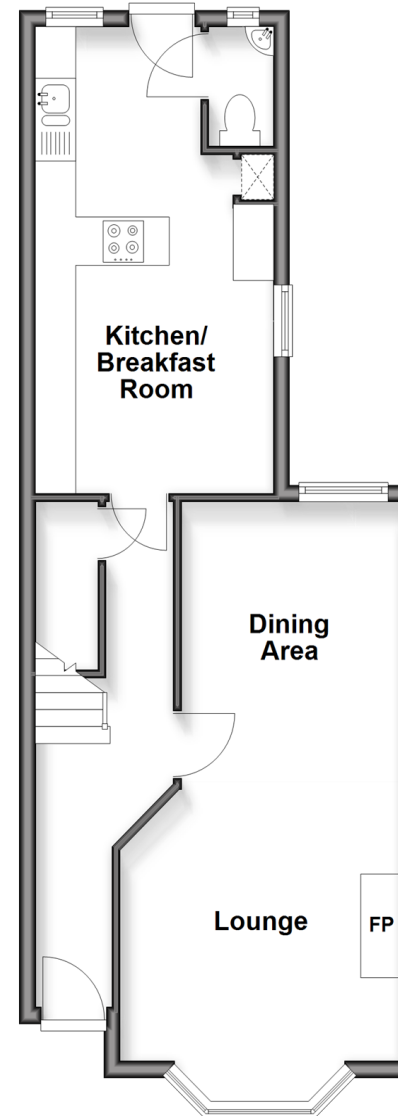
OUTSIDE

Rear Garden

Off Street Parking

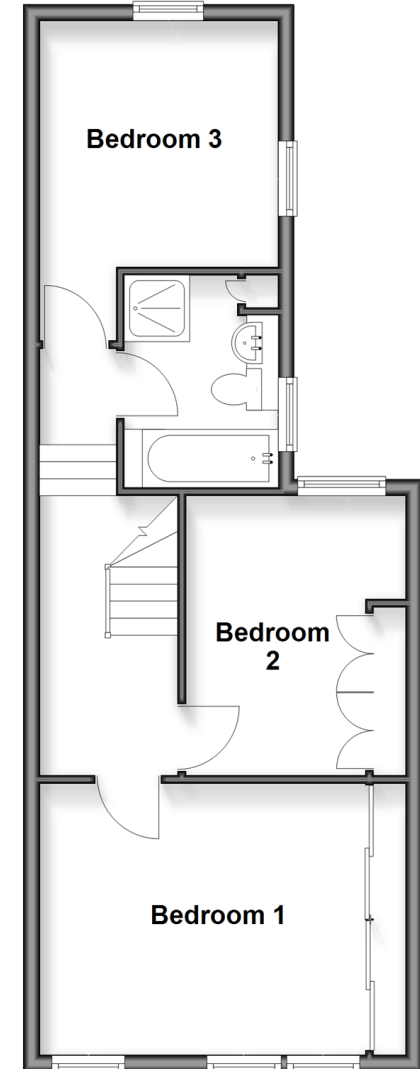
Ground Floor

Approx. 47.1 sq. metres (507.3 sq. feet)



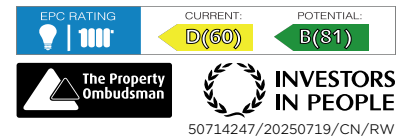
Split Level First Floor

Approx. 47.7 sq. metres (513.8 sq. feet)



Call Chadwell Heath - 020 8597 0043 ■ douglasallen.co.uk

- A private rental licensing scheme applies to some properties in this area, please contact us before proceeding
- Legal advice should be taken to verify fixtures/fittings, planning, alterations and/or lease details
- Appliances & services are untested, dimensions are approximate and floor plans are not to scale
- Through a Homewise Home For Life Plan people aged 60+ can secure this property for up to 59% less, by purchasing a Lifetime Lease.



50714247/20250719/CN/RW