



**Price**  
**£475,000**

**Freehold**

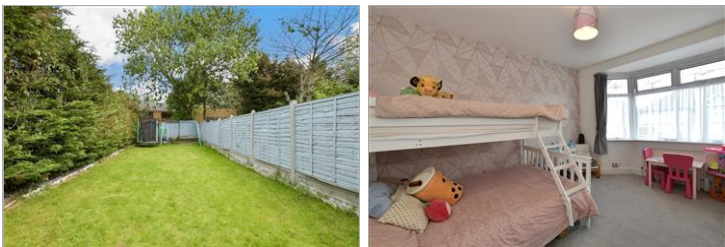
3x  1x  1x 

**Wadeville Avenue,  
Romford, Essex, RM6**

**OVER 60?**

Secure this property  
for up to **59% less!**

 **DOUGLAS  
ALLEN**  
Helping you move forwards



## Main features

- **Spacious terraced home in a sought after location**
- **Bright and modern open plan lounge and dining area**
- **Great size rear garden ideal for a family**
- **Off street parking**
- **Located close to local amenities, schools and Chadwell Heath Station**

## Accommodation

### GROUND FLOOR

Entrance Hall

Kitchen: 9'3 x 7'1 (2.82m x 2.16m)

Lounge : 13'7 x 11'9 (4.14m x 3.58m)

Dining Area: 12'7 x 10'5 (3.84m x 3.18m)

### FIRST FLOOR

Landing

Bedroom 1: 12'2 x 11'7 (3.71m x 3.53m)

Bedroom 2: 14'6 x 11'7 (4.42m x 3.53m)

Bedroom 3: 9'5 x 7'3 (2.87m x 2.21m)

Bathroom

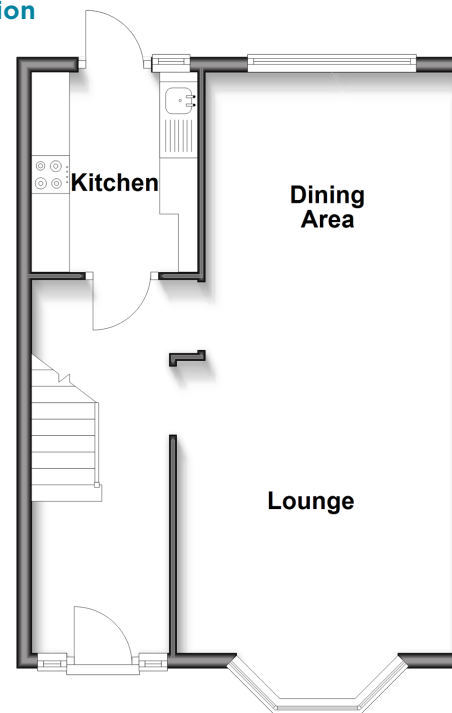
### OUTSIDE

Rear Garden

Off Street Parking

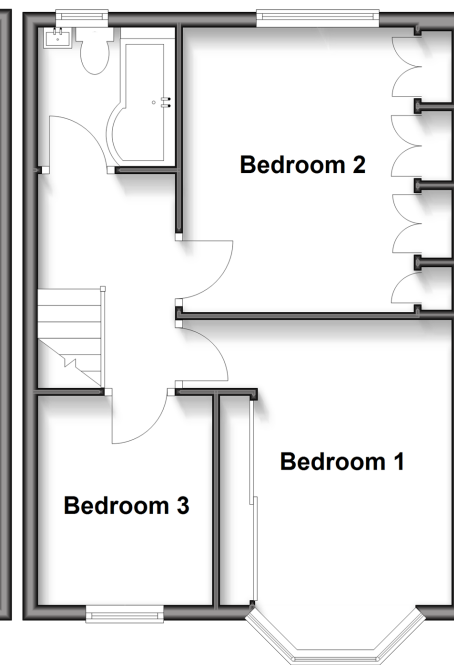
### Ground Floor

Approx. 42.9 sq. metres (462.2 sq. feet)



### First Floor

Approx. 41.8 sq. metres (450.2 sq. feet)



**Call Chadwell Heath - 020 8597 0043 ■ [douglasallen.co.uk](http://douglasallen.co.uk)**

- A private rental licensing scheme applies to some properties in this area, please contact us before proceeding
- Legal advice should be taken to verify fixtures/fittings, planning, alterations and/or lease details
- Appliances & services are untested, dimensions are approximate and floor plans are not to scale
- Through a Homewise Home For Life Plan people aged 60+ can secure this property for up to 59% less, by purchasing a Lifetime Lease.

