

OVER 60?

Secure this property
for up to **59% less!**

Price

£450,000

Freehold

2x  1x  2x 

**Ilfracombe Gardens,
Chadwell Heath, Essex,
RM6**

 **DOUGLAS
ALLEN**
Helping you move forwards



Main features

- Attractive terraced house with additional loft room
- Off street parking
- Situated in the Redbridge Borough
- Walking distance to Goodmayes station
- Close to Chadwell Heath Academy & Barley Lane Primary school

Accommodation

GROUND FLOOR

Entrance Hall

Lounge/Dining Area: 25'0 x 10'2 (7.63m x 3.10m)

Family Room: 15'7 x 9'3 (4.75m x 2.82m)

Kitchen: 9'6 x 6'6 (2.90m x 1.98m)

FIRST FLOOR

Landing

Bedroom 1: 11'8 x 9'1 (3.56m x 2.77m)

Bedroom 2: 10'8 x 10'0 (3.25m x 3.05m)

Bathroom

Separate Toilet

SECOND FLOOR

Loft Room: 18'0 x 9'8 (5.49m x 2.95m)

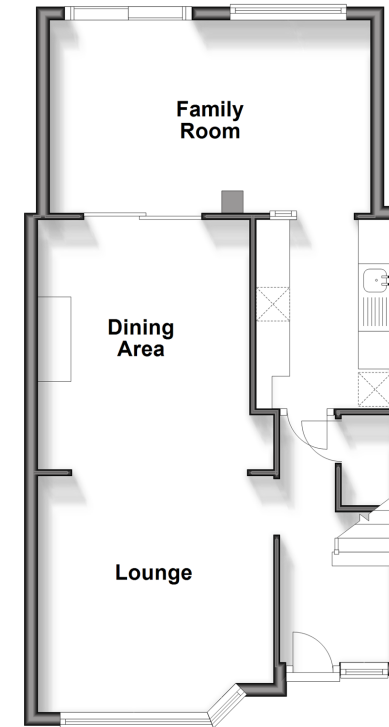
OUTSIDE

Call Chadwell Heath - 020 8597 0043 ■ douglasallen.co.uk

- A private rental licensing scheme applies to some properties in this area, please contact us before proceeding
- Legal advice should be taken to verify fixtures/fittings, planning, alterations and/or lease details
- Appliances & services are untested, dimensions are approximate and floor plans are not to scale
- Through a Homewise Home For Life Plan people aged 60+ can secure this property for up to 59% less, by purchasing a Lifetime Lease.

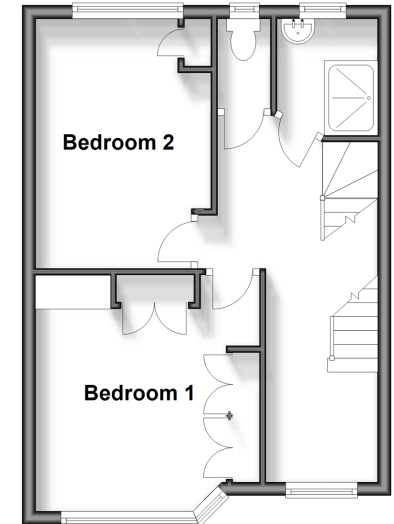
Ground Floor

Approx. 51.2 sq. metres (550.9 sq. feet)



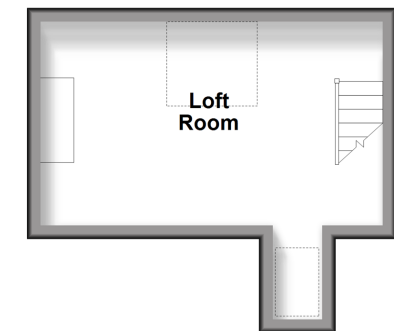
First Floor

Approx. 36.2 sq. metres (390.0 sq. feet)



Second Floor

Approx. 16.5 sq. metres (177.2 sq. feet)



50713953/20250416/MH/MH