



Price

£725,000

Freehold

4x  2x  2x 

**Freshwell Avenue,
Romford, Essex, RM6**

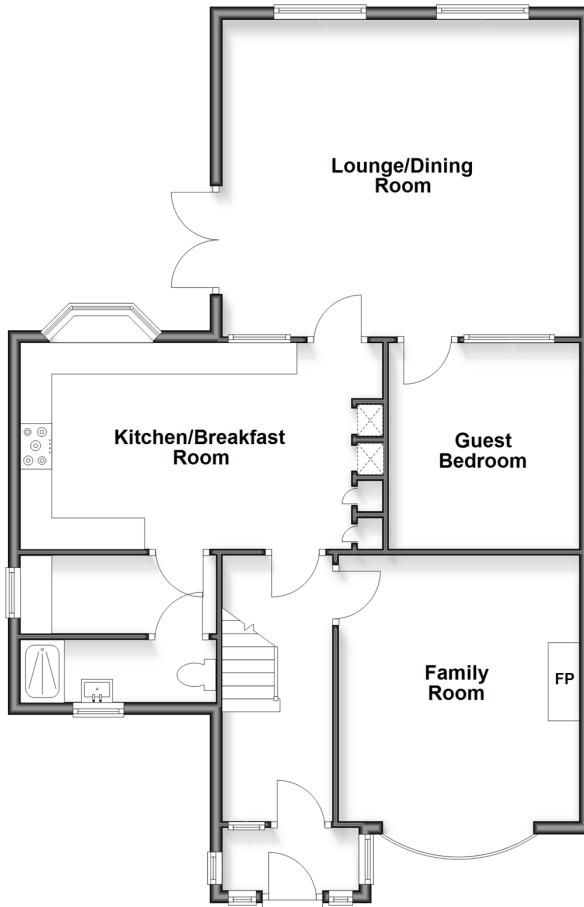
OVER 60?

Secure this property
for up to **59% less!**

 **DOUGLAS
ALLEN**
Helping you move forwards

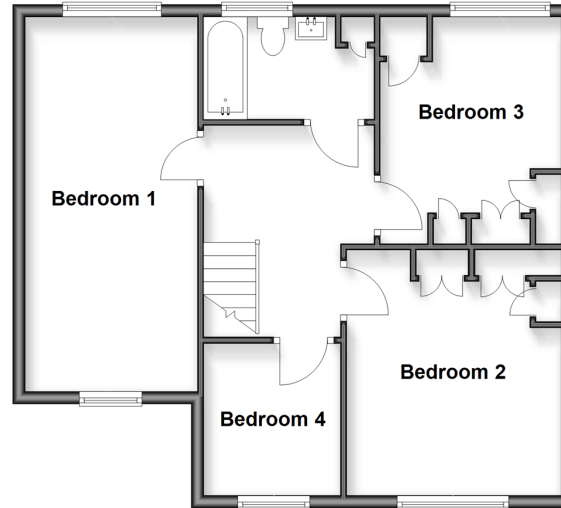
Ground Floor

Approx. 94.7 sq. metres (1018.9 sq. feet)



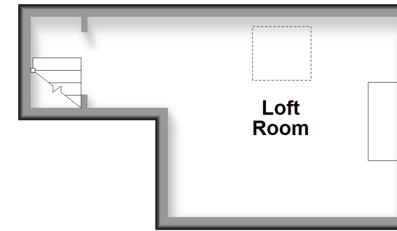
First Floor

Approx. 60.7 sq. metres (653.8 sq. feet)



Second Floor

Approx. 15.0 sq. metres (161.7 sq. feet)



Outbuilding

Approx. 30.5 sq. metres (328.8 sq. feet)



Accommodation

GROUND FLOOR

Entrance Porch
Entrance Hall
Family Room: 14'0 x 12'6 (4.27m x 3.81m)
Lounge/Dining Room: 18'4 x 16'8 (5.59m x 5.08m)
Kitchen/Breakfast Room: 18'8 x 11'5 (5.69m x 3.48m)
Utility Room
Guest Bedroom: 10'8 x 9'8 (3.25m x 2.95m)
Shower Room

FIRST FLOOR

Landing
Bedroom 1: 19'7 x 8'9 (5.97m x 2.67m)
Bedroom 2: 12'8 x 11'6 (3.86m x 3.51m)
Bedroom 3: 11'8 x 9'8 (3.56m x 2.95m)
Bedroom 4: 7'7 x 7'6 (2.31m x 2.29m)
Bathroom

SECOND FLOOR

Loft Room: 15'4 x 10'5 (4.68m x 3.18m)

OUTBUILDING

Room 1

OUTSIDE

Rear Garden
Driveway



Main features

- Spacious semi detached family home in the Redbridge Borough
- Large driveway & outbuilding
- Ground floor utility & shower room with first floor bathroom
- Close to bus links & Chadwell Heath station
- Walking distance to local schools & places of worship



Nearest Schools

Primary Schools: Grove Primary 0.3 miles, St Bede's Catholic Primary 0.7 miles, William Torbitt Primary 0.9 miles

Secondary Schools: Newbridge School 0.5 miles



Transport Information

Train Stations: Chadwell Heath 1.2 miles, Goodmayes 1.5 miles, Seven Kings 2.0 miles

Underground Newbury Park 2.1 miles, Becontree 2.9 miles, Dagenham Heathway 2.9 miles



Address

Freshwell Avenue, Romford, Essex, RM6



Directions

For directions to this property please contact us.

